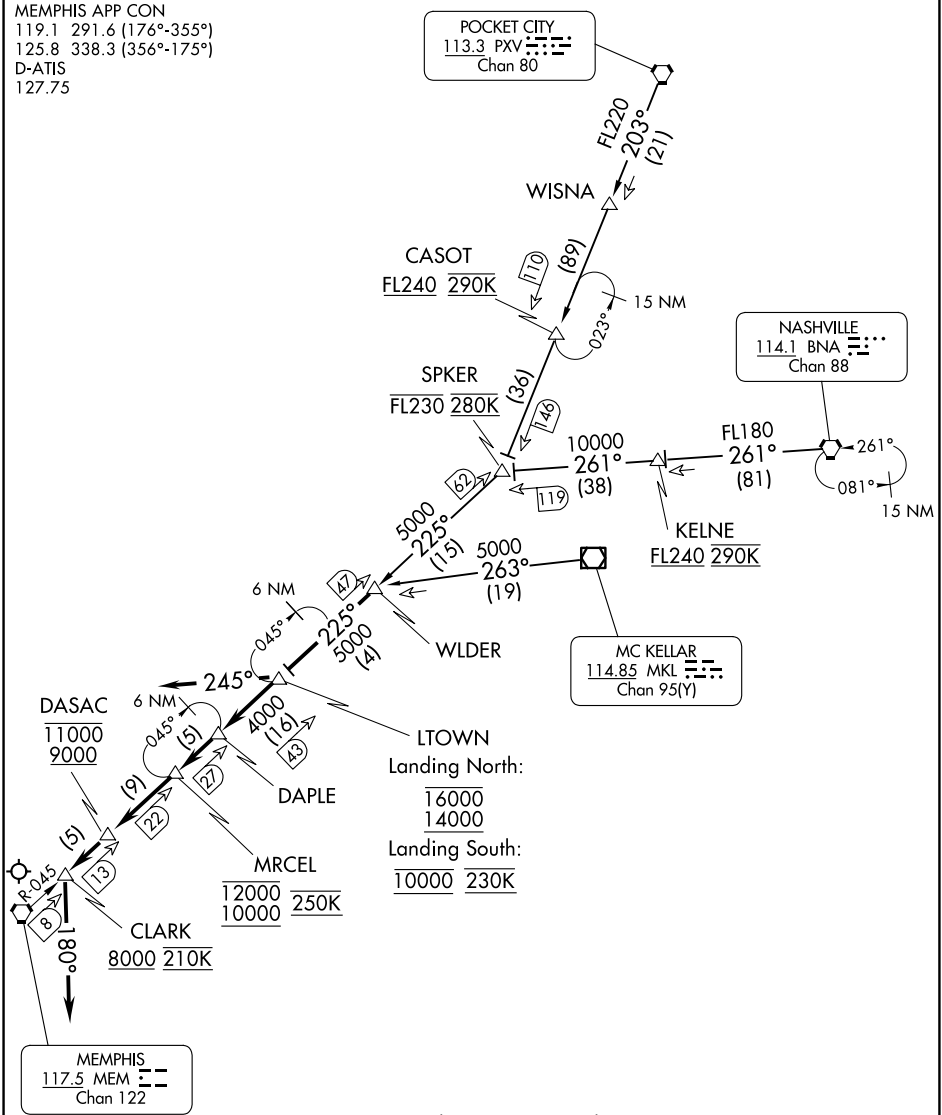


(WLDER.WLDER1) 23334  
WLDER ONE ARRIVAL

AL-253 (FAA)

MEMPHIS INTL (MEM)  
MEMPHIS, TENNESSEE

MEMPHIS APP CON  
119.1 291.6 (176°-355°)  
125.8 338.3 (356°-175°)  
D-ATIS  
127.75



NOTE: DME and RADAR required.  
NOTE: Procedure NA for RNAV capable jets.  
NOTE: RNAV capable jets must file the BLUZZ RNAV STAR.  
NOTE: Maintain last assigned altitude until cleared to  
"Descend via the WLDER ONE", then comply with altitude  
restrictions as published.

(NARRATIVE ON FOLLOWING PAGE)

NOTE: Chart not to scale.

WLDER ONE ARRIVAL  
(WLDER.WLDER1) 24MAR22

MEMPHIS, TENNESSEE  
MEMPHIS INTL (MEM)

SE-1, 10 JUL 2025 to 07 AUG 2025

SE-1, 10 JUL 2025 to 07 AUG 2025