

APP CRS 180°	Rwy Idg	9320
	TDZE	295
	Apt Elev	341

RNAV (RNP) Y RWY 18R

MEMPHIS INTL (MEM)

▼

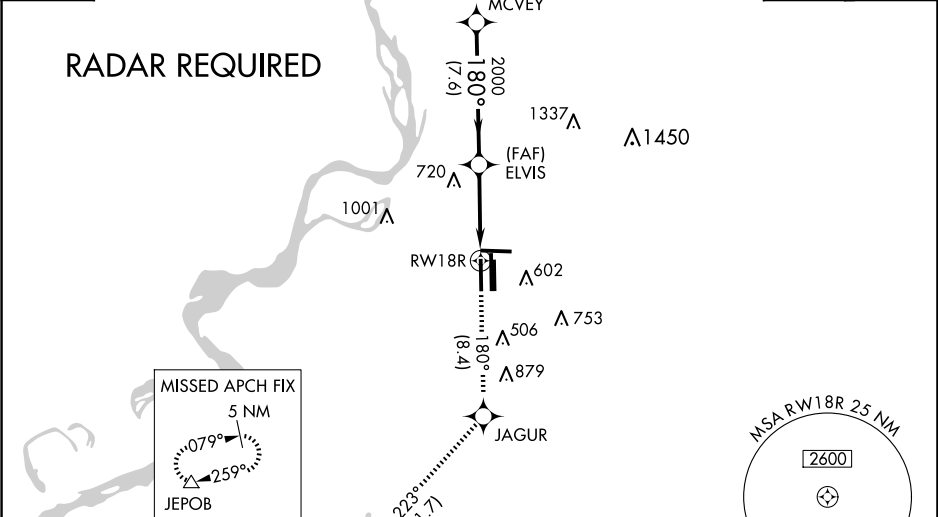
For uncompensated Baro-VNAV systems, procedure NA below -9°C (16°F) or above 48°C (118°F). Simultaneous approach authorized. GPS required. Use of FD or AP required during simultaneous operations. For inop ALS, increase RNP 0.19* all Cats visibility to RVR 6000 and RNP 0.30 all Cats visibility to 1¾ SM.

MALSR

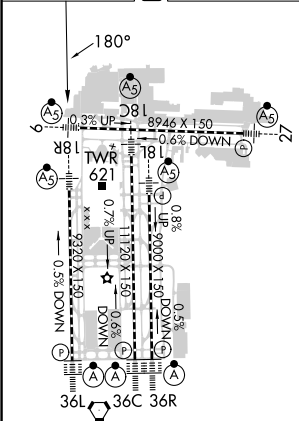
MISSED APPROACH: Climb to 5000 on track 180° to JAGUR and on track 223° to JEPOB and hold. *Missed approach requires minimum climb of 425 feet per NM to 1000.

MEMPHIS APP CON		MEMPHIS TOWER		GND CON	
119.1	291.6	(Rwy 9-27)	118.3 257.8	(Rwy 9-27)	121.0 379.2
	(176°-355°)	(Rwys 18C-36C, 18L-36R)	119.7 257.8	(Rwys 18C-36C, 18L-36R)	121.9 379.2
125.8	338.3	(Rwy 18R-36L)	128.425 257.8	(Rwy 18R-36L)	121.65 379.2
	(356°-175°)				

D-ATIS	CLNC DEL	CPDLC
127.75	125.2	



ELEV 341	D	TDZE 295
----------	---	----------



TDZ/CL Rwys 18L, 18C, 18R, 36R, 36C, and 36L
HIRL all Rwys

5000	tr 180°	JAGUR	tr 223°	JEPOB
CATEGORY				
RNP 0.19 DA *				
RNP 0.30 DA				

AUTHORIZATION REQUIRED