

APP CRS	Rwy Idg	11120
180°	TDZE	290
	Apt Elev	341

RNAV (RNP) Y RWY 18C

MEMPHIS INTL (MEM)

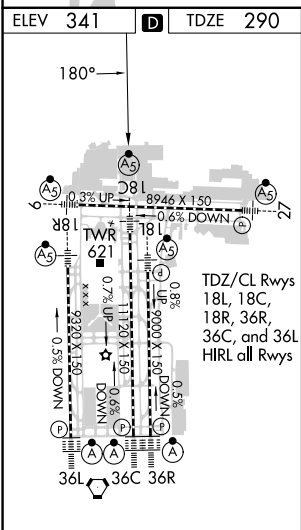
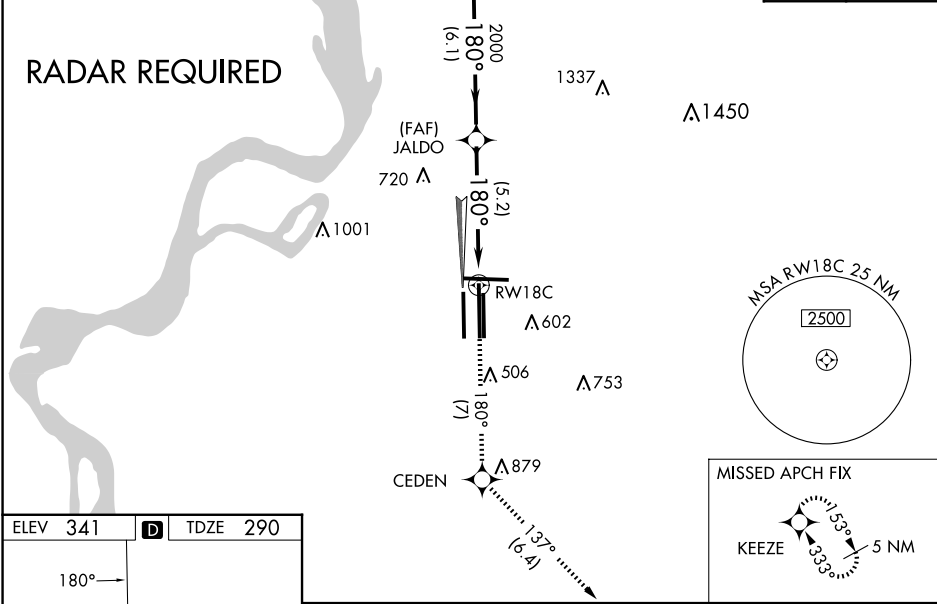
⚠ For uncompensated Baro-VNAV systems, procedure NA below -10°C (14°F) or above 54°C (130°F). GPS required. For inop ALS, increase RNP 0.30* all Cats visibility to 1½ SM and RNP 0.30 all Cats visibility to 1½ SM. Simultaneous approach authorized. Use of FD or AP required during simultaneous operations.

MALSR

MISSED APPROACH: Climb to 5000 on track 180° to CEDEN on track 137° to KEEZE and hold, continue climb-in-hold to 5000. *Missed approach requires a minimum climb of 400 feet per NM to 1000.

MEMPHIS APP CON	MEMPHIS TOWER	GND CON
119.1 291.6 (176°-355°)	(Rwy 9-27) 118.3 257.8	(Rwy 9-27) 121.0 379.2
125.8 338.3 (356°-175°)	(Rwys 18C-36C, 18L-36R) 119.7 257.8	(Rwys 18C-36C, 18L-36R) 121.9 379.2
	(Rwy 18R-36L) 128.425 257.8	(Rwy 18R-36L) 121.65 379.2

D-ATIS	CLNC DEL	CPDLC
127.75	125.2	



5000	tr 180°	CEDEN	tr 137°	KEEZE	LAURI
					3900
		RWY 18C	JALDO		2000
					2000
		5.2 NM	6.1 NM		GP 3.00° TCH 54
CATEGORY	A	B	C	D	
RNP 0.30 DA*	655/35	365 (400-%)			
RNP 0.30 DA	747/54	457 (500-1)			
AUTHORIZATION REQUIRED					

SE-1, 10 JUL 2025 to 07 AUG 2025

SE-1, 10 JUL 2025 to 07 AUG 2025