

RNAV (GPS) RWY 9
MEMPHIS INTL (MEM)

MEMPHIS APP CON			MEMPHIS TOWER			GND CON		
119.1	291.6	(176°-355°)	(Rwy 9-27)	118.3	257.8	(Rwy 9-27)	121.0	379.2
			(Rwys 18C-36C, 18L-36R)	119.7	257.8	(Rwys 18C-36C, 18L-36R)	121.9	379.2
125.8	338.3	(356°-175°)	(Rwy 18R-36L)	128.425	257.8	(Rwy 18R-36L)	121.65	379.2

2000
131° (18.4)

(IF/IAF)
BUDEE

2000 NoPT
183°
(5)

093°

273°

4 NM

2000 NoPT
003°
(5)

(IAF)
JAMKO

1700
093°
(6.1)

(FAF)
FALIX

2100 to BUDEE
287°
(11)

MEMPHIS
MEM

506

720

1001

RW09

KIMRE

602

753
177°
(11.7)

879

1450

2000
045°
(33.8)

MARVELL
UJM

Procedure NA for arrivals at UJM
VOR/DME on V16-54 westbound.

MSA RW09 25 NM

2500

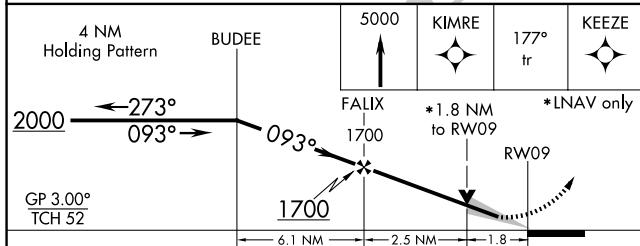
KEEZE

153°
333°
5 NM

ELEV 341

093°

LD 259



ELEV 341 D TDZE 259

093°

A5 0.3% UP 18 8946 X 150 0.6% DOWN A5

TWR 621 0.7% UP 18 0.8% UP 9000 X 150 0.5% DOWN

P 9220 X 150 0.5% DOWN P

36L 36C 36R

TDZ/CL Rwy's 18L, 18C, 18R,
36R, 36C, and 36L
HIRL all Rwy's

SE-1 10 JUL 2025 to 07 AUG 2025