

WAAS CH <b>65907</b> <b>W36A</b>	APP CRS <b>360°</b>	Rwy Idg TDZE Apt Elev	<b>9320</b> <b>321</b> <b>341</b>
--	------------------------	-----------------------------	---

RNAV (GPS) RWY 36L

MEMPHIS INTL(MEM)

⚠

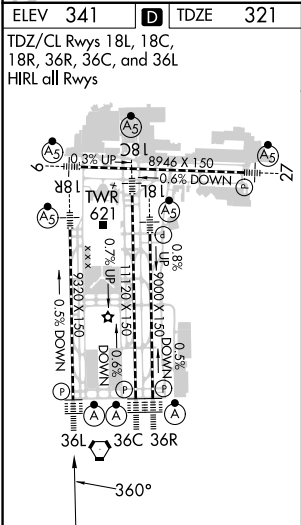
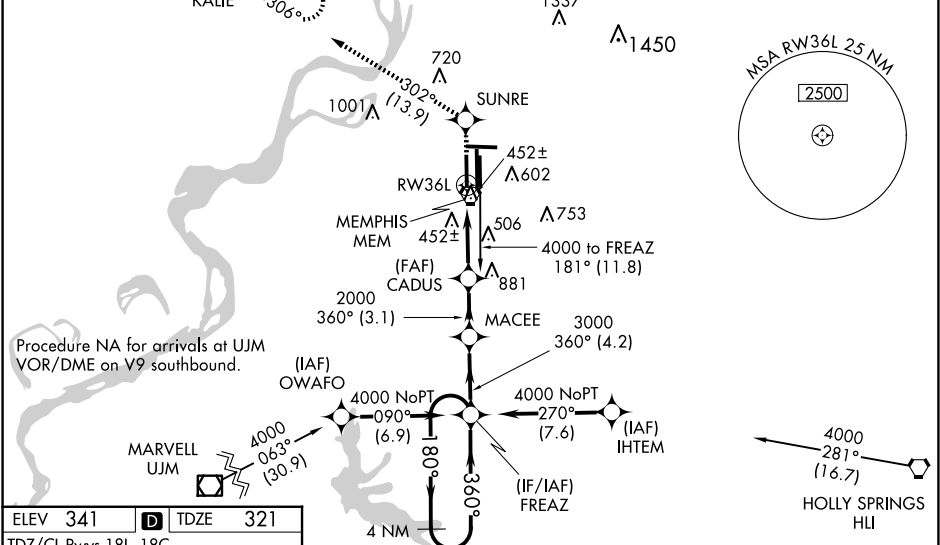
For uncompensated Baro-VNAV systems, LNAV/VNAV NA below -15°C (5°F) or above 48°C (118°F). Simultaneous approach authorized. DME/DME RNP-0.3 NA. LNAV procedure NA during simultaneous operations. Use of FD or AP required during simultaneous operations.

ALSF-2

MISSED APPROACH: Climb to 5000 direct SUNRE and on track 302° to KALIE and hold, continue climb-in-hold to 5000.

MEMPHIS APP CON		MEMPHIS TOWER	GND CON
119.1	291.6 (176°-355°)	(Rwy 9-27) <b>118.3 257.8</b>	(Rwy 9-27) <b>121.0 379.2</b>
125.8	338.3 (356°-175°)	(Rwys 18C-36C, 18L-36R) <b>119.7 257.8</b>	(Rwys 18C-36C, 18L-36R) <b>121.9 379.2</b>
		(Rwy 18R-36L) <b>128.425 257.8</b>	(Rwy 18R-36L) <b>121.65 379.2</b>

D-ATIS <b>127.75</b>	CINC DEL <b>125.2</b>	CPDLC
-------------------------	--------------------------	-------



5000	SUNRE	tr 302°	KALIE	
*LNAV only.				
*1.2 NM to RW36L				
RW36L				
MACEE				
CADUS				
FRAZ				
4 NM Holding Pattern				
GP 3.00° TCH 59				
VGSi and RNAV glidepath not coincident (VGSi Angle 3.00/TCH 73).				
1.2 3.8 NM 3.1 NM 4.2 NM				
CATEGORY	A	B	C	D
LPV DA	673/40 352 (400-¾)			
LNAV/VNAV DA	760/50 439 (500-1)			
LNAV MDA	780/24	459 (500-½)	780/40 459 (500-¾)	780/50 459 (500-1)
CIRCLING	940-1	599 (600-1)	940-1½ 599 (600-1½)	1020-2¼ 679 (700-2¼)