

LOC/DME I-MYO <b>111.35</b> Chan <b>50 (Y)</b>	APP CRS <b>360°</b>	Rwy Idg TDZE <b>335</b> Apt Elev <b>341</b>
--	------------------------	---

ILS or LOC RWY 36R  
MEMPHIS INTL (MEM)

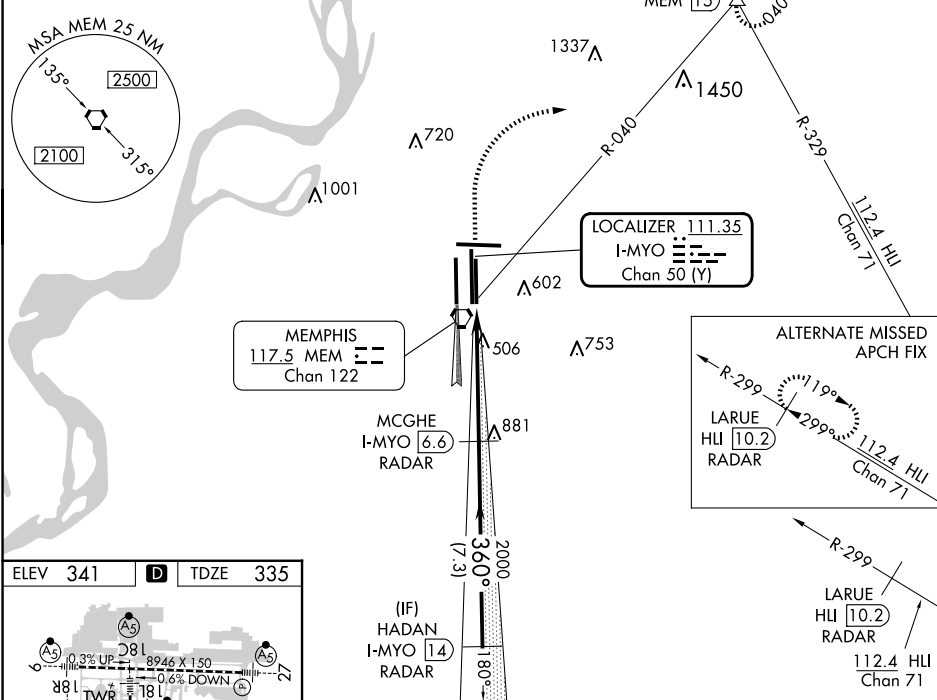
**⚠** For inoperative ALSF, increase S-ILS 36R Cat E visibility to RVR 4000 and S-LOC 36R Cat E visibility to 1½. Simultaneous approach authorized with Rwy 36L. DME or RADAR required.

**ALSF-2**

**MISSED APPROACH:** Climb to 1000 then climbing right turn to 5000 via heading 070° and MEM VORTAC R-040 to OROCU INT/MEM VORTAC 15 DME and hold, continue climb-in-hold to 5000.

MEMPHIS APP CON <b>119.1 291.6</b> (176°-355°) <b>125.8 338.3</b> (356°-175°)	MEMPHIS TOWER (Rwy 9-27) <b>118.3 257.8</b> (Rwys 18C-36C, 18L-36R) <b>119.7 257.8</b> (Rwy 18R-36L) <b>128.425 257.8</b>	GND CON (Rwy 9-27) <b>121.0 379.2</b> (Rwys 18C-36C, 18L-36R) <b>121.9 379.2</b> (Rwy 18R-36L) <b>121.65 379.2</b>	CLNC DEL <b>125.2</b>
---	--	---	--------------------------

D-ATIS <b>127.75</b>	<b>RADAR REQUIRED</b>	CPDLC
-------------------------	-----------------------	-------



ELEV 341	<b>D</b>	TDZE 335
----------	----------	----------

TDZ/CL Rwys 18L, 18C, 18R, 36R, 36C, and 36L  
HIRL all Rwys

FAF to MAP 5 NM

Knots	60	90	120	150	180
Min:Sec	5:00	3:20	2:30	2:00	1:40

1000	5000	MEM R-040	OROCU	MCGHE I-MYO RADAR 2000	HADAN I-MYO RADAR 14
↑	hdg 070°				
<p>ILS 36R: 1.2 NM, 3.8 NM, 7.3 NM</p> <p>GS 3.00° TCH 58</p>					
CATEGORY	A	B	C	D	E
S-ILS 36R	535/18 200 (200-½)				535/24 200 (200-½)
S-LOC 36R	760/24 425 (500-½)		760/40 425 (500-¾)		760/50 425 (500-1)
<b>C</b> CIRCLING	940-1 599 (600-1)		940-1½ 1020-2¼ 599 (600-1½) 679 (700-2¼)		1140-2¾ 799 (800-2¾)

SE-1, 10 JUL 2025 to 07 AUG 2025

SE-1, 10 JUL 2025 to 07 AUG 2025