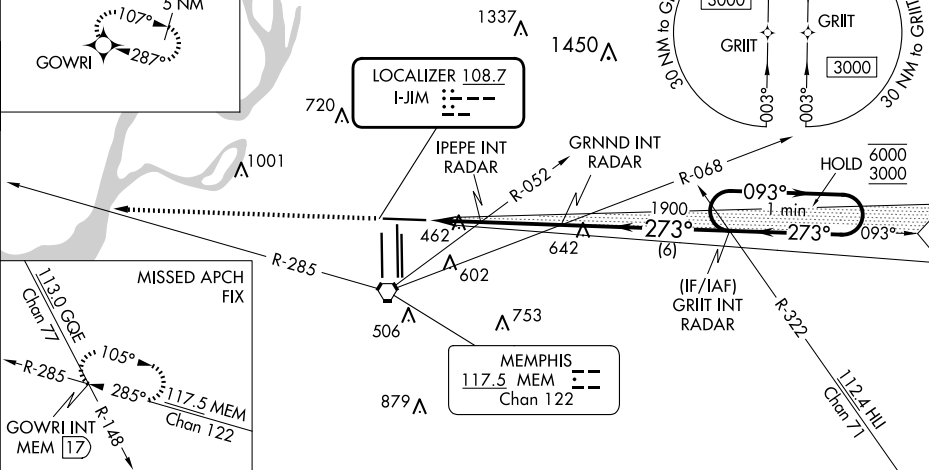


ILS or LOC RWY 27
MEMPHIS INTL (MEM)

MISSED APPROACH: Climb to 5000 and intercept MEM VORTAC R-285 to GOWRI INT/17 DME and hold, continue climb-in-hold to 5000.



D-ATIS 127.75	CLNC DEL 125.2	CPDLC
-------------------------	--------------------------	-------



ELEV 341 **TDZE 292**

5000 **MEM R-285** **GOWRI INT** **VGSI and ILS glidepath not coincident (VGSI Angle 3.00/TCH 69).** **One Minute Holding Pattern**

GRINT INT RADAR **093°** **6000** **3000** **273°** **GS 3.00° TCH 54**

IPEPE INT RADAR **1900** **1900** **980** **273°** **2 NM** **2.9 NM** **6 NM**

CATEGORY	A	B	C	D	E
S-ILS 27 *	492/24 200 (200-½)				
S-LOC 27	980/24 688 (700-½)	980-1½ 688 (700-1½)			
CIRCLING	980-1 639 (700-1)	980-2 639 (700-2) 1020-2¼ 679 (700-2¼) 1140-2¾ 799 (800-2¾)			
IPEPE FIX MINIMUMS (DUAL VOR RECEIVERS OR RADAR REQUIRED)					
S-LOC 27	720/24 428 (400-½)	720/40 428 (400-¾)			
CIRCLING	940-1 599 (600-1)	940-1½ 599 (600-1½) 1020-2¼ 679 (700-2¼) 1140-2¾ 799 (800-2¾)			

FAF to MAP 4.9 NM

Knots	60	90	120	150	180
Min:Sec	4:54	3:16	2:27	1:58	1:38

MEMPHIS INTL (MEM)
ILS or LOC RWY 27