

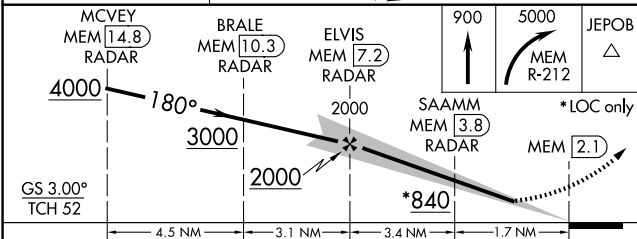
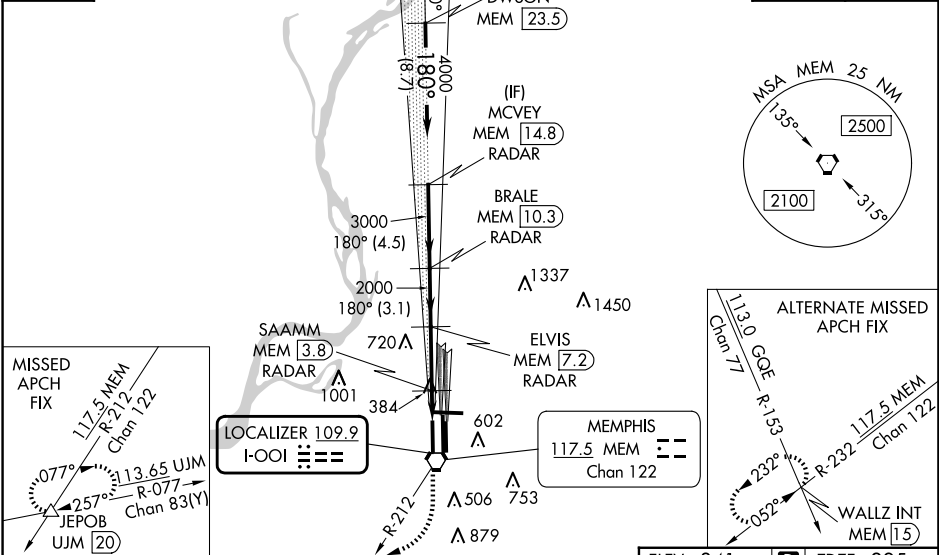
LOC I-001	APP CRS	Rwy Idg	9320
109.9	180°	TDZE	295
		Apt Elev	341

ILS or LOC RWY 18R  
MEMPHIS INTL (MEM)

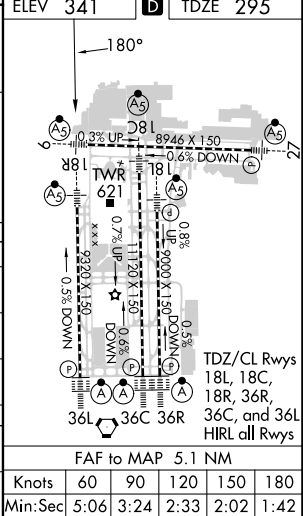
Radar required for procedure entry, DME or RADAR required.		MALSR	MISSED APPROACH: Climb to 900 then climbing right turn to 5000 on MEM VORTAC R-212 to JEPOB INT/UJM 20 DME and hold.
Simultaneous approach authorized. For inop ALS, increase S-ILS 18R Cat E visibility to RVR 4000, S-LOC 18R Cat E visibility to 2 SM, SAAMM fix minimums, increase S-LOC 18R Cat E visibility to 1½ SM.		AS	

MEMPHIS APP CON			MEMPHIS TOWER			GND CON		
119.1	291.6	(176°-355°)	(Rwy 9-27)	118.3	257.8	(Rwy 9-27)	121.0	379.2
125.8	338.3	(356°-175°)	(Rwys 18C-36C, 18L-36R)	119.7	257.8	(Rwys 18C-36C, 18L-36R)	121.9	379.2
			(Rwy 18R-36L)	128.425	257.8	(Rwy 18R-36L)	121.65	379.2

D-ATIS	1486 A	CLNC DEL	CPDLC
127.75		125.2	



CATEGORY	A	B	C	D	E
S-ILS 18R	495/18 200 (200-½)				495/24 200 (200-½)
S-LOC 18R	840/24 545 (500-½)	840/50 545 (500-1)	840/60 545 (500-1½)	840-1½ 545 (500-1½)	
CIRCLING	940-1 599 (600-1)	940-1½ 599 (600-1½)	1020-2¼ 679 (700-2¼)	1140-2¾ 799 (800-2¾)	
SAAMM FIX MINIMUMS (DME OR RADAR REQUIRED)					
S-LOC 18R	700/24 405 (400-½)	700/40 405 (400-¾)	700/50 405 (400-1)		
CIRCLING	940-1 599 (600-1)	940-1½ 599 (600-1½)	1020-2¼ 679 (700-2¼)	1140-2¾ 799 (800-2¾)	



SE-1, 10 JUL 2025 to 07 AUG 2025

SE-1, 10 JUL 2025 to 07 AUG 2025