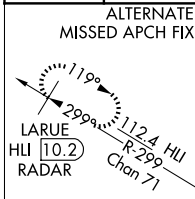


ILS or LOC RWY 18L  
MEMPHIS INTL (MEM)

MALSR

D-ATIS  
127.75



## RADAR REQUIRED

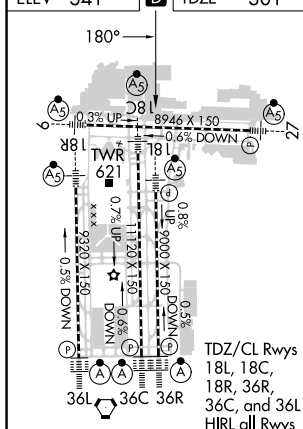
[illegible]

Diagram illustrating the ILS glidepath and approach procedure for Runway 18L. The glidepath is 3.00° TCH 60. Key stations and elevations are marked: REISE I-EXS RADAR (3000 ft), RONEE I-EXS RADAR (2000 ft), and BRYNSN I-EXS RADAR (820 ft). Distances between stations are 7.7 NM, 3.5 NM, 0.8 NM, and 0.9 NM. A note indicates 'VGSI and ILS glidepath not coincident (VGSI Angle 3.00/TCH 73)'. A 'KEEZE INT' box shows a 900 ft climb and a 5000 ft descent. A 'LOC only' note is present.

MEMPHIS INTL (MEM)  
ILS or LOC RWY 18L