


LOC I-SDU <b>111.95</b>	APP CRS <b>180°</b>	Rwy ldy <b>11120</b>
	TDZE <b>290</b>	
	Apt Elev <b>341</b>	

ILS or LOC RWY 18C  
MEMPHIS INTL (MEM)

<b>⚠</b> Simultaneous approach authorized. <b>⚠</b> DME or RADAR required. For inop ALS, increase S-ILS 18C all Cats visibility to 1¼ SM.	MALSR 	MISSED APPROACH: Climb to 900 then climbing left turn to 5000 on MEM VORTAC R-151 to KEEZE INT/MEM 10.4 DME and hold, continue climb-in-hold to 5000.
---	--	---

MEMPHIS APP CON <b>119.1 291.6</b> (176°-355°) <b>125.8 338.3</b> (356°-175°)	MEMPHIS TOWER (Rwy 9-27) <b>118.3 257.8</b> (Rwys 18C-36C, 18L-36R) <b>119.7 257.8</b> (Rwy 18R-36L) <b>128.425 257.8</b>	GND CON (Rwy 9-27) <b>121.0 379.2</b> (Rwys 18C-36C, 18L-36R) <b>121.9 379.2</b> (Rwy 18R-36L) <b>121.65 379.2</b>
---	--	---

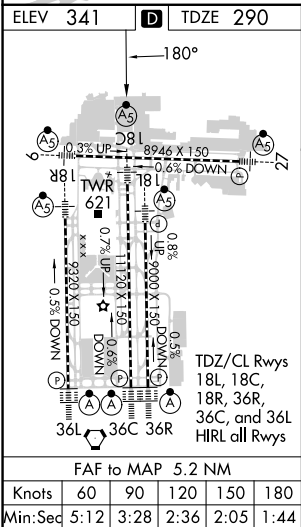
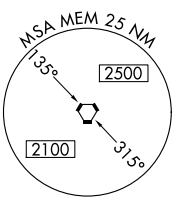
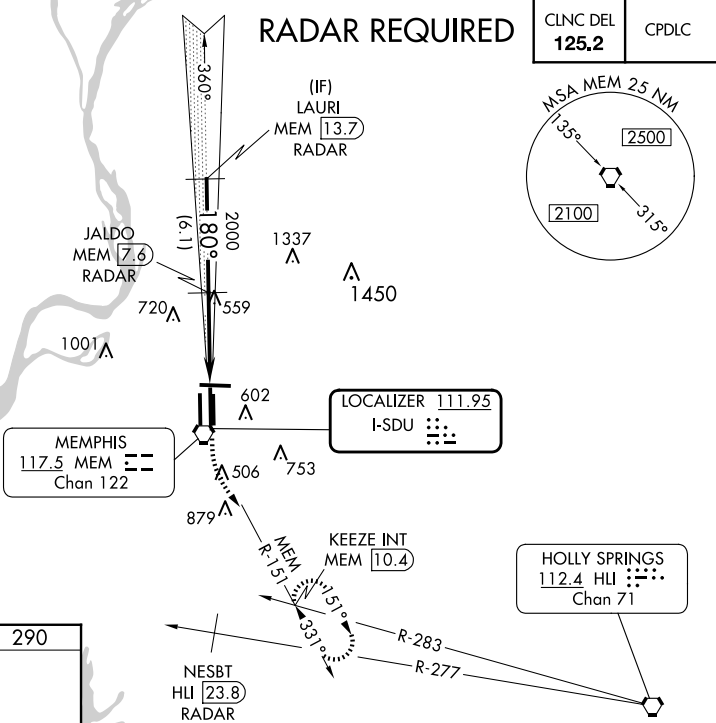
D-ATIS <b>127.75</b>	<b>RADAR REQUIRED</b>	CLNC DEL <b>125.2</b>	CPDLC
-------------------------	-----------------------	--------------------------	-------

ALTERNATE MISSED  
APCH FIX

NESBT  
HLI **23.8**  
RADAR

112.4 HLI  
R-277  
Chan 71

097°  
277°



<div><div><div>LAURI MEM 13.7 RADAR</div><div>3000</div><div>GS 3.00° TCH 54</div></div><div><div>JALDO MEM 7.6 RADAR</div><div>2000</div><div>2000</div></div><div><div>900 5000 MEM R-151</div><div>KEEZE INT</div></div></div> <div><div>180°</div><div>6.1 NM</div><div>5.2 NM</div></div>									
CATEGORY	A	B	C	D	E				
S-ILS 18C	657/40 367 (400-¾)								
S-LOC 18C	860/24	570 (600-½)	860/50 570 (600-1)	860/60 570 (600-1¼)	860-1½ 570 (600-1½)				
CIRCLING	940-1	599 (600-1)	940-1½ 599 (600-1½)	1020-2¼ 679 (700-2¼)	1140-2¾ 799 (800-2¾)				

SE-1, 10 JUL 2025 to 07 AUG 2025

SE-1, 10 JUL 2025 to 07 AUG 2025