

LOC/DME I-MYO 111.35 Chan 50 (Y)	APP CRS 360°	Rwy Idg TDZE 335 Apt Elev 341
--	------------------------	---

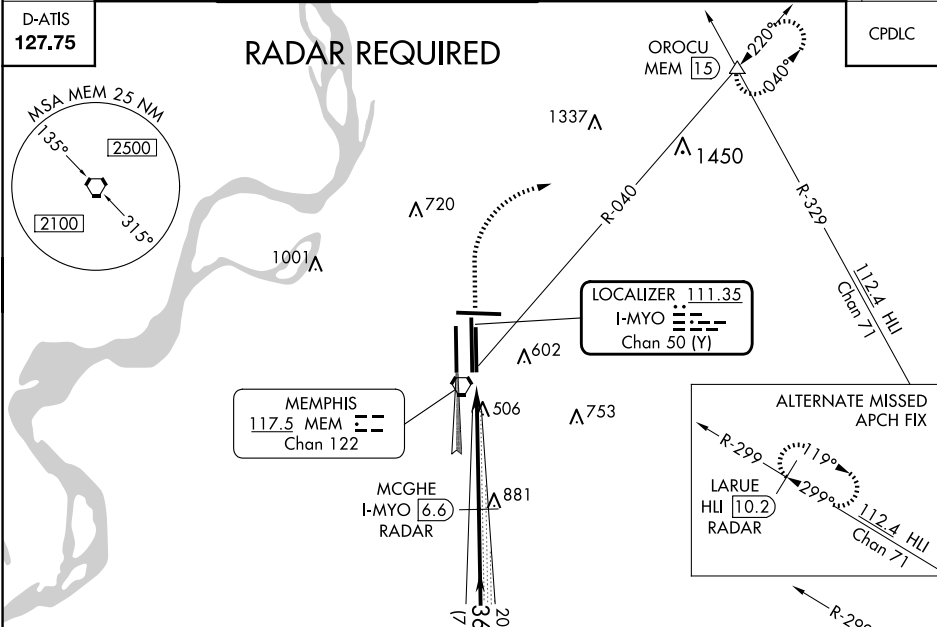
ILS RWY 36R (CAT II & III)
MEMPHIS INTL (MEM)

Simultaneous approach authorized with Rwy 36L.
DME or RADAR required.

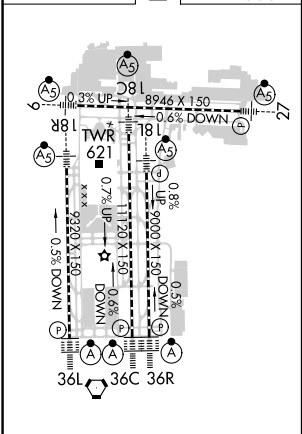
ALSF-2

MISSED APPROACH: Climb to 1000 then climbing right turn to 5000 via heading 070° and MEM VORTAC R-040 to OROCU INT/MEM VORTAC 15 DME and hold, continue climb-in-hold to 5000.

MEMPHIS APP CON	MEMPHIS TOWER	GND CON	CLNC DEL
(Rwy 9-27) 119.1 291.6 (176°-355°)	(Rwy 9-27) 118.3 257.8	(Rwy 9-27) 121.0 379.2	
(Rwys 18C-36C, 18L-36R) 125.8 338.3 (356°-175°)	(Rwys 18C-36C, 18L-36R) 119.7 257.8	(Rwys 18C-36C, 18L-36R) 121.9 379.2	125.2
	(Rwy 18R-36L) 128.425 257.8	(Rwy 18R-36L) 121.65 379.2	



ELEV 341	TDZE 335
----------	----------



TDZ/CL Rwys 18L, 18C, 18R, 36R, 36C, and 36L
HIRL all Rwys

1000	5000	MEM R-040	OROCU	MCGHE I-MYO 6.6 RADAR	HADAN I-MYO 14 RADAR
↑	hdg 070°		△	2000	3000
VGSI and ILS glidepath not coincident (VGSI Angle 3.00/TCH 69).					
1131' 5 NM 7.3 NM					
CATEGORY	A	B	C	D	
S-ILS 36R	CAT II RA 109/12 100 DA 435				
S-ILS 36R	CAT IIIa RVR07				
S-ILS 36R	CAT IIIb RVR03				
S-ILS 36R	CAT IIIc NA				

CATEGORY II & III ILS - SPECIAL AIRCREW & AIRCRAFT CERTIFICATION REQUIRED