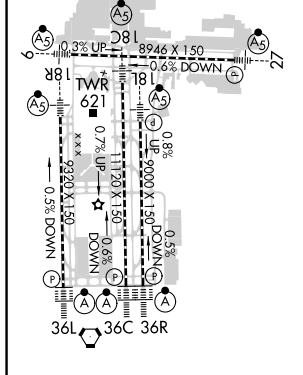
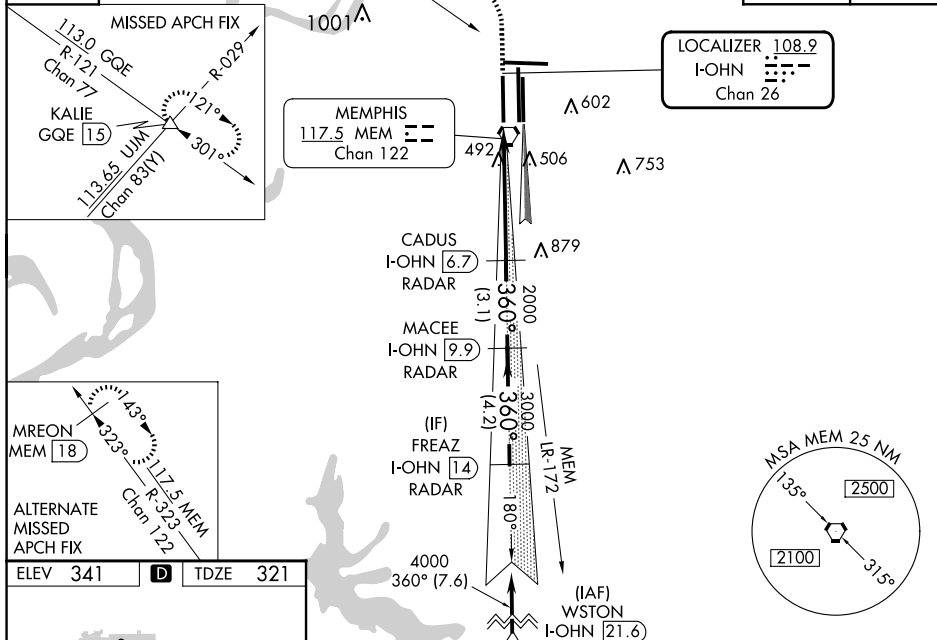


ILS RWY 36L (CAT II & III)
MEMPHIS INTL (MEM)

ALSF-2

MISSED APPROACH: Climb to 1000 then climbing left turn to 5000 via heading 330° and GQE VOR/DME R-121 to KALIE INT/GQE 15 DME and hold, continue climb-in-hold to 5000.

D-ATIS 127.75	<p>113.0 GQE Chan 77</p> <p>R-121</p> <p>720</p>	CLNC DEL 125.2	CPDLC
-------------------------	--	--------------------------	-------



1000 ↑	5000 hdg 330°	GQE R-121	KALIE △	VGSI and ILS glidepath not coincident (VGSI Angle 3.00/TCH 73).				FREAZ I-OHN [14]
			CADUS I-OHN [6.7] RADAR	MACEE I-OHN [9.9] RADAR				
			2000	360°	4000			
			2000	3000				Procedure Turn NA GS 3.00° TCH 59
			1300'	5 NM	3.1 NM	4.2 NM		
CATEGORY	A	B	C	D				
S-ILS 36L	CAT II				RA 100/12	100	DA 421	
S-ILS 36L	CAT IIIa				RVR 07			
S-ILS 36L	CAT IIIb				RVR 03			
S-ILS 36L	CAT IIIc				NA			

CATEGORY II & III ILS - SPECIAL AIRCREW
& AIRCRAFT CERTIFICATION REQUIRED

SE-1, 10 JUL 2025 to 07 AUG 2025

SE-1 10 JUL 2025 to 07 AUG 2025