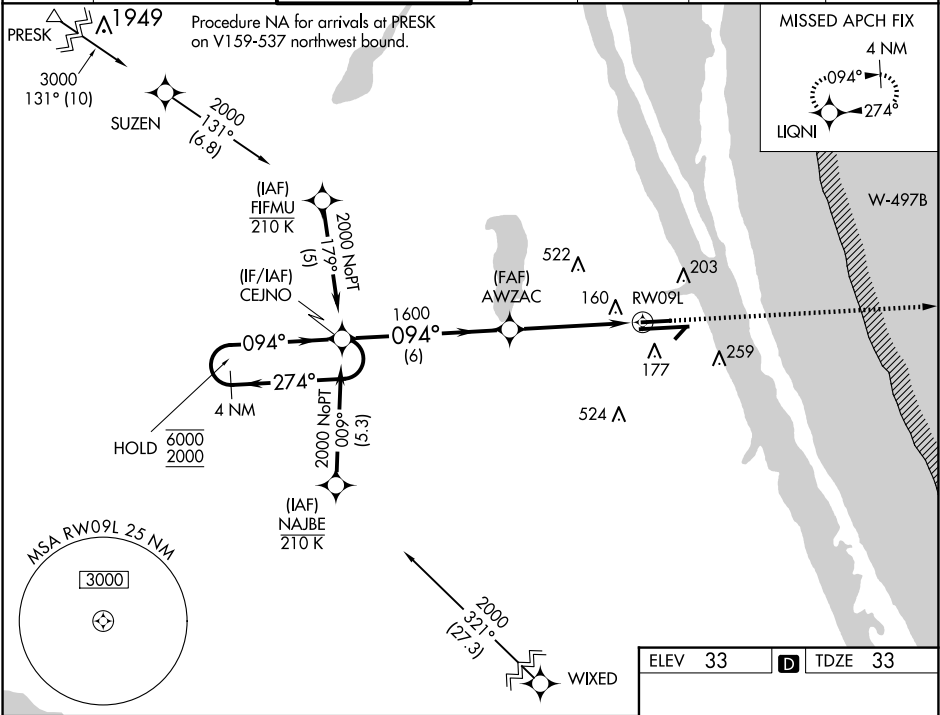


WAAS CH <b>65601</b> <b>W09A</b>	APP CRS <b>094°</b>	Rwy Idg TDZE <b>33</b> Apt Elev <b>33</b>
--	------------------------	---

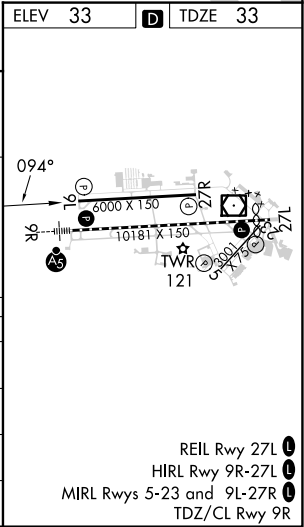
**RNAV (GPS) RWY 9L**  
MELBOURNE ORLANDO INTL (MLB)

RNP APCH - GPS.			MISSED APPROACH: Climb to 2000 direct LIQNI and hold.		
For uncompensated Baro-VNAV systems, LNAV/VNAV NA below 2°C or above 54°C. Rwy 9L helicopter visibility reduction below ¾ SM NA.					

ATIS <b>132.55</b>	ORLANDO APP CON <b>132.65 281.425</b>	MELBOURNE TOWER ★ <b>118.2(CTAF) 0 257.8</b>	GND CON <b>121.9</b>	CLNC DEL <b>121.9</b>	CLNC DEL <b>132.65</b> (When twr closed)	UNICOM <b>122.95</b>
-----------------------	--	---	-------------------------	--------------------------	--	-------------------------



4NM Holding Pattern		VGSI and RNAV glidepath not coincident (VGSI Angle 3.00/TCH 39°).		2000	LIQNI
6000 2000		CEJNO	AWZAC	1600	1.3 NM to RW09L
GP 3.00° TCH 55		1600	1600	1600	RW09L
		6 NM	3.5 NM	1.3	
CATEGORY	A	B	C	D	
LPV DA	283-¾		250 (300-¾)		
LNAV/VNAV DA	473-1¼		440 (500-1¼)		
LNAV MDA	480-1	447 (500-1)	480-1⅜	447 (500-1⅜)	
CIRCLING	500-1 467 (500-1)	560-1 527 (600-1)	680-1¾ 647 (700-1¾)	880-2¾ 847 (900-2¾)	



SE-3, 10 JUL 2025 to 07 AUG 2025

SE-3, 10 JUL 2025 to 07 AUG 2025