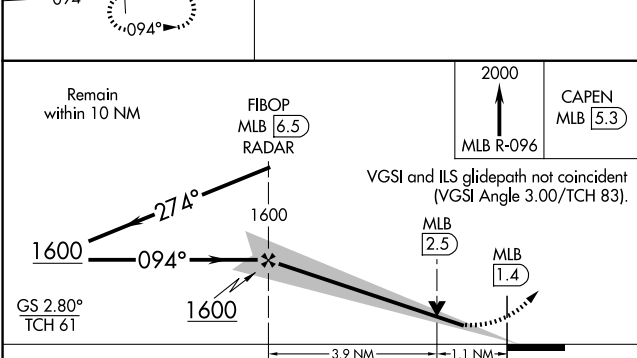
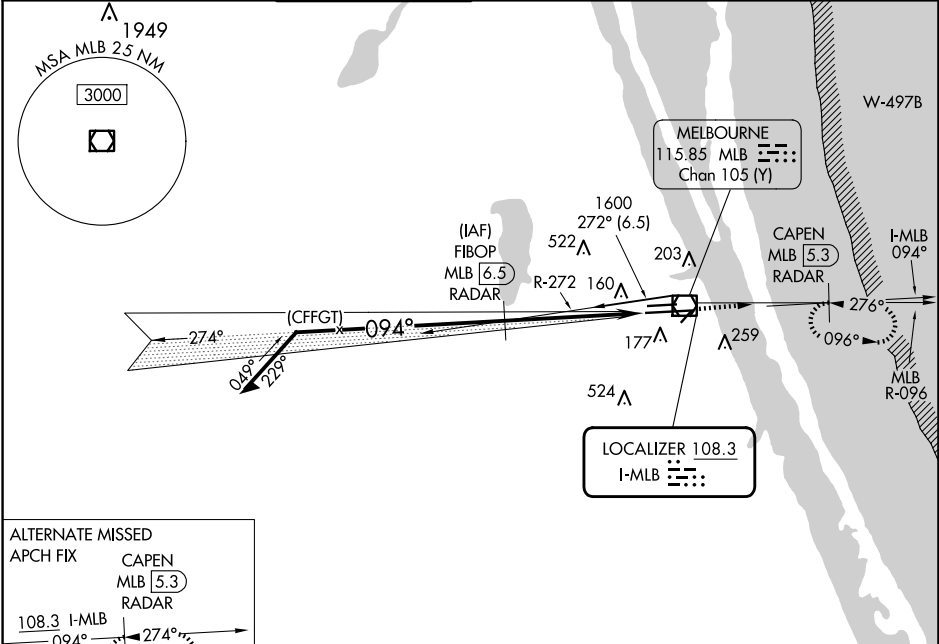


LOC I-MLB 108.3	APP CRS 094°	Rwy Idg TDZE Apt Elev 10181 32 33
---------------------------	------------------------	---

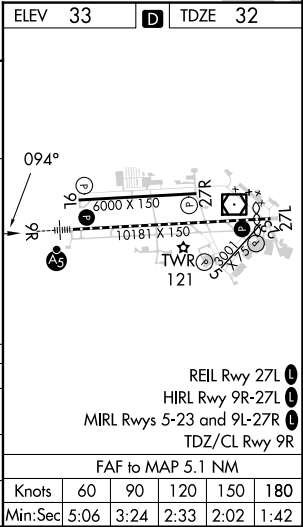
ILS or LOC RWY 9R
MELBOURNE ORLANDO INTL (MLB)

DME or RADAR required.		MALSR	MISSED APPROACH: Climb to 2000 on MLB VOR/DME R-096 to CAPEN/MLB VOR/DME 5.3 DME/RADAR and hold, continue climb-in-hold 2000.
------------------------	--	-------	---

ATIS 132.55	ORLANDO APP CON 132.65 281.425	MELBOURNE TOWER ★ 118.2 (CTAF) 0 257.8	GND CON 121.9	CLNC DEL 121.9	CLNC DEL 132.65 (When twr closed)	UNICOM 122.95
-----------------------	--	---	-------------------------	--------------------------	--	-------------------------



CATEGORY	A	B	C	D
S-ILS 9R	232/18 200 (200-½)			
S-LOC 9R	480/24	448 (500-½)	480/45	448 (500-¾)
CIRCLING	500-1 467 (500-1)	560-1 527 (600-1)	680-1¾ 647 (700-1¾)	880-2¾ 847 (900-2¾)



SE-3, 10 JUL 2025 to 07 AUG 2025

SE-3, 10 JUL 2025 to 07 AUG 2025