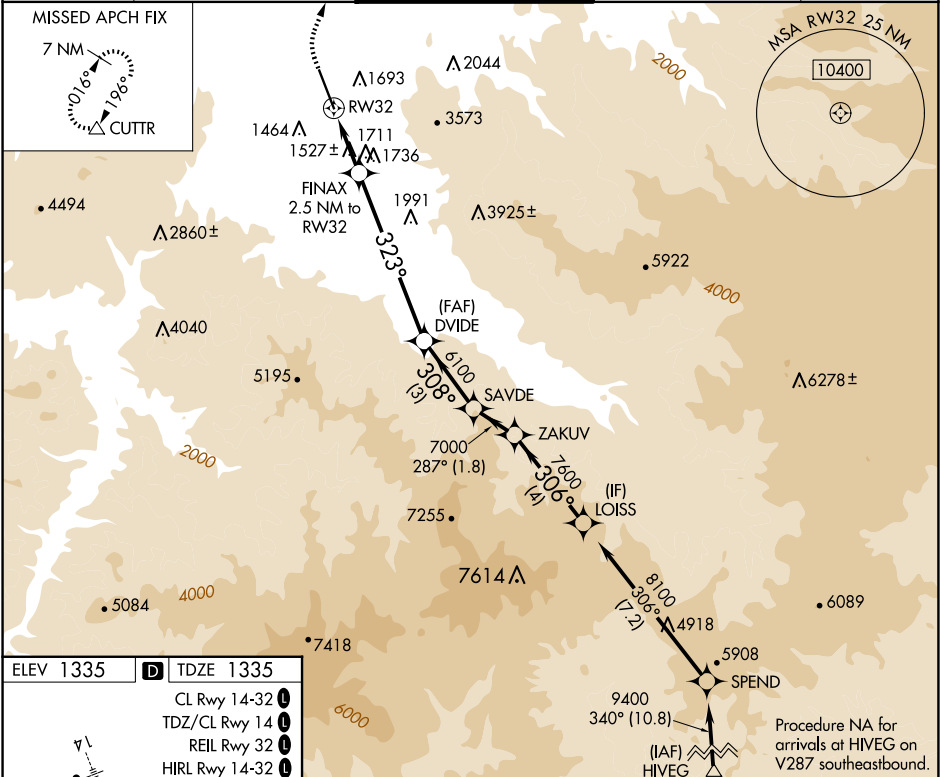


WAAS CH <b>56544</b> <b>W32A</b>	APP CRS <b>323°</b>	Rwy Idg TDZE <b>1335</b> Apt Elev <b>1335</b>
--	------------------------	---

RNAV (GPS) Y RWY 32  
ROGUE VALLEY INTL/MEDFORD (MFR)

RNP APCH - GPS.	MISSED APPROACH: Climb to 1900 then climbing right turn to 10500 direct CUTTR and hold, continue climb-in-hold to 10500.			
▼ -3°C	Baro-VNAV NA.			
ATIS <b>127.25</b>	CASCADE APP CON* <b>124.3 379.9</b>	MEDFORD TOWER* <b>119.4 (CTAF) 0 257.8</b>	GND CON <b>121.8</b>	UNICOM <b>122.95</b>



1900	10500	CUTTR	VGSi and RNAV glidepath not coincident (VGSi Angle 3.00°/TCH 50).				LOISS	
RW32		1.2 NM to RW32		6100		287°		8100
2.5 NM to RW32		DVIDE		SAVDE		ZAKUV		306°
323°		308°		7000		7600		GP 4.95° TCH 50
2700		6100		3 NM		1.8 NM		4 NM
1.2		1.3 NM		6.5 NM		3 NM		1.8 NM
CATEGORY		A		B		C		D
LPV	DA	1610-7/8 275 (300-7/8)				NA		
LNAV/ VNAV	DA	1768-1 1/4 433 (500-1 1/4)				NA		
LNAV	MDA	1780-1 445 (500-1)				NA		
CIRCLING		2000-1 665 (700-1)				NA		