

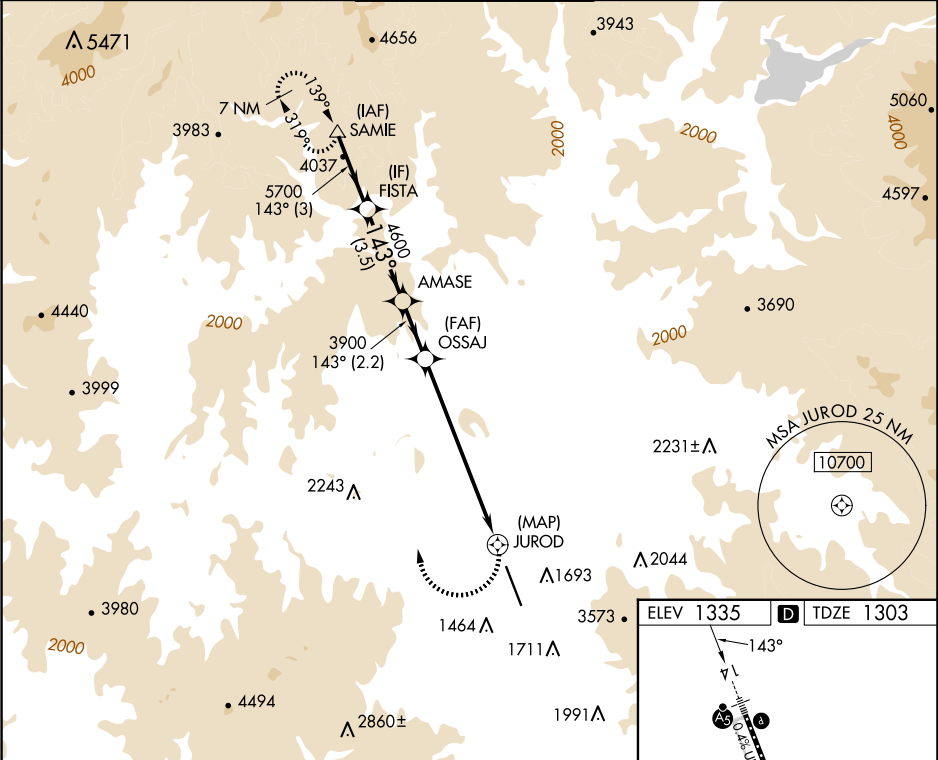
APP CRS	Rwy Idg	8800
143°	TDZE	1303
	Apt Elev	1335

RNAV (GPS) Y RWY 14

ROGUE VALLEY INTL/MEDFORD (MFR)

RNP APCH.	MALSR	MISSED APPROACH: Climbing right turn 7000 direct SAMIE and hold, continue climb-in-hold to 7000. *Missed approach requires minimum climb of 334 feet per NM to 4800.
<div><div>When Medford altimeter setting not received, procedure NA. Inop table does not apply to Cats C and D.</div><div>-3°C</div></div>	<div><div></div><div>A5</div></div>	

ATIS 127.25	CASCADE APP CON ★ 124.3 379.9	MEDFORD TOWER ★ 119.4 (CTAF) 257.8	GND CON 121.8	UNICOM 122.95
----------------	----------------------------------	---------------------------------------	------------------	------------------



SAMIE		FISTA		AMASE		OSSAJ		JUROD	
7000		5700		4600		3900		7000	
143°		143°		143°		143°		143°	
3 NM		3.5 NM		2.2 NM		4.1 NM		3 NM	
CATEGORY		A		B		C		D	
LNAV MDA*		2600/40 1297 (1300-¾)		2600/55 1297 (1300-1)		2600-3 1297 (1300-3)			
LNAV MDA		2600/40 1297 (1300-¾)		2600/55 1297 (1300-1)		3320-3 2017 (2000-3)		3460-3 2157 (2200-3)	

