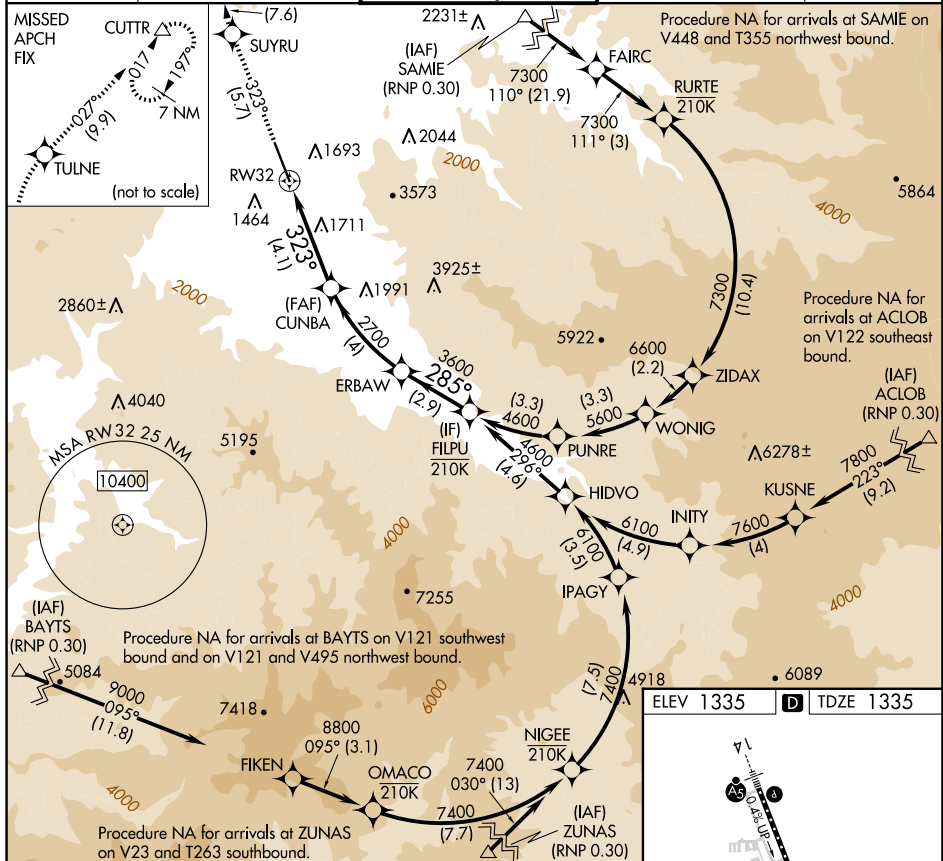


APP CRS 323°	Rwy Idg 8800 TDZE 1335 Apt Elev 1335
------------------------	---

RNAV (RNP) Z RWY 32
ROGUE VALLEY INTL/MEDFORD (MFR)

RNP AR APCH-GPS.		MISSED APPROACH: Climb to 9000 on 323° to SUYRU, right turn to TULNE, then on track 027° to CUTTR and hold, continue climb-in-hold to 9000.
<div> <div> <div></div> <div></div> </div> <div> <div></div> <div></div> </div> </div> <div> <div></div> <div></div> </div>	<div>For uncompensated Baro-VNAV systems, procedure NA below -6°C or above 54°C.</div>	

ATIS 127.25	CASCADE APP CON★ 124.3 379.9	MEDFORD TOWER★ 119.4 (CTAF) 0 257.8	GND CON 121.8	UNICOM 122.95
-----------------------	--	---	-------------------------	-------------------------



9000 ↑ 323°	SUYRU ✦	TULNE ✦ fr 027°	CUTTR △	ERBAW	FILPU 4600
CATEGORY	A	B	C	D	
RNP 0.10 DA	1683-1 348 (400-1)				
RNP 0.30 DA	1870-1½ 535 (600-1½)				
AUTHORIZATION REQUIRED					

