

LOC/DME I-MFR	APP CRS	Rwy Idg	8800
110.3	143°	TDZE	1303
Chan 40		Apt Elev	1335

ILS or LOC RWY 14

ROGUE VALLEY INTL/MEDFORD (MFR)

DME required. DME or RADAR required for procedure entry.

▼

▲

⊗

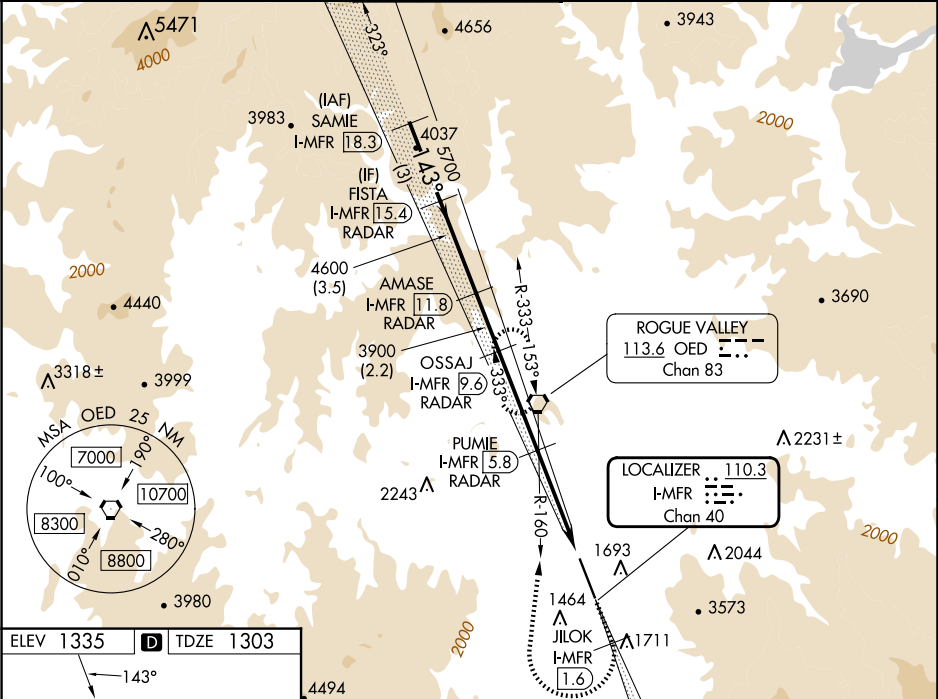
Circling NA for Cats C and D northeast of Rwy 14-32.
When Medford altimeter setting not received, procedure NA. For inop ALS, increase S-ILS 14 visibility to 1½ SM, increase S-LOC 14# Cats C and D visibility to RVR 5500, increase S-LOC 14 Cats C and D visibility to 2½ SM.

MALSR

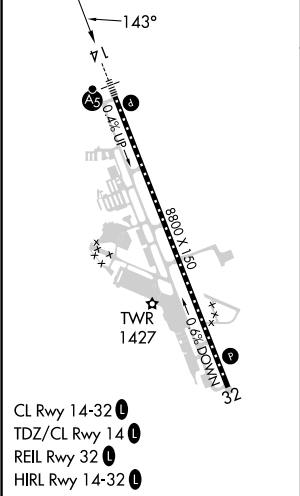
⚡

MISSED APPROACH: Climb to 6600 on I-MFR SE course to JLOK/I-MFR 1.6 DME and climbing right turn on heading 350° and on OED VORTAC R-160 to OED VORTAC and hold, continue climb-in-hold to 6600.
#Missed approach requires minimum climb of 331 feet per NM to 4100.

ATIS	CASCADE APP CON★	MEDFORD TOWER★	GND CON	UNICOM
127.25	124.3 379.9	119.4 (CTAF) 0257.8	121.8	122.95



ELEV 1335	D	TDZE 1303
-----------	---	-----------



VGSI and ILS glidepath not coincident (VGSI Angle 3.00/TCH 73).				
<div><div>SAMIE I-MFR 18.3</div><div>FISTA I-MFR 15.4</div><div>AMASE I-MFR 11.8</div><div>OSSAJ I-MFR 9.6</div><div>PUMIE I-MFR 5.8</div><div>JLOK I-MFR 1.6</div></div>				
<div><div>7000</div><div>5700</div><div>4600</div><div>3900</div><div>3900</div><div>2660</div></div>				
<div><div>GS 3.00°</div><div>TCH 58</div></div>				
<div><div>3 NM</div><div>3.5 NM</div><div>2.2 NM</div><div>3.8 NM</div><div>3.2 NM</div><div>1 NM</div></div>				
CATEGORY	A	B	C	D
S-ILS 14#		1503/18	200 (200-½)	
S-ILS 14		1929-1¾	626 (600-1¾)	
S-LOC 14#	1680/24	377 (400-½)	1680/35	377 (400-¾)
S-LOC 14	2080/24 777 (800-½)	2080/40 777 (800-¾)	2080-1¾	777 (800-1¾)
CIRCLING	2080-1 745 (800-1)	2080-1¼ 745 (800-1¼)	2080-2½ 745 (800-2½)	2340-3 1005 (1100-3)