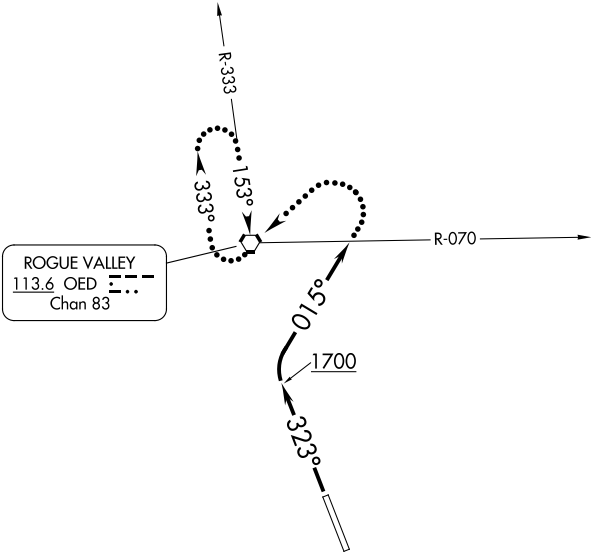


CASCADE DEP CON ★
124.3 379.9
ATIS
127.25
GND CON
121.8
MEDFORD TOWER ★
119.4 (CTAF) 257.8
SEATTLE CENTER
124.85 306.3

TOP ALTITUDE:
11000



TAKEOFF MINIMUMS

Rwys 14: NA - ATC.
Rwy 32: Standard with minimum climb of 410' per NM to 6300.

NOTE: Chart not to scale.



DEPARTURE ROUTE DESCRIPTION

TAKEOFF RUNWAY 32: Climb to 1700 on heading 323° then climbing right turn heading 015°, maintain 11000 or assigned altitude, expect RADAR vectors to assigned route; expect filed altitude/flight level five minutes after departure.

LOST COMMUNICATIONS: If no contact with ATC crossing the OED R-070, turn left, proceed direct OED VORTAC, continue climb in holding pattern to minimum crossing altitude/minimum enroute altitude before proceeding on course.

NW-1, 10 JUL 2025 to 07 AUG 2025

NW-1, 10 JUL 2025 to 07 AUG 2025