

WAAS CH <b>77603</b> <b>W09A</b>	APP CRS <b>089°</b>	Rwy Idg <b>8175</b> TDZE <b>857</b> Apt Elev <b>869</b>
--	------------------------	---

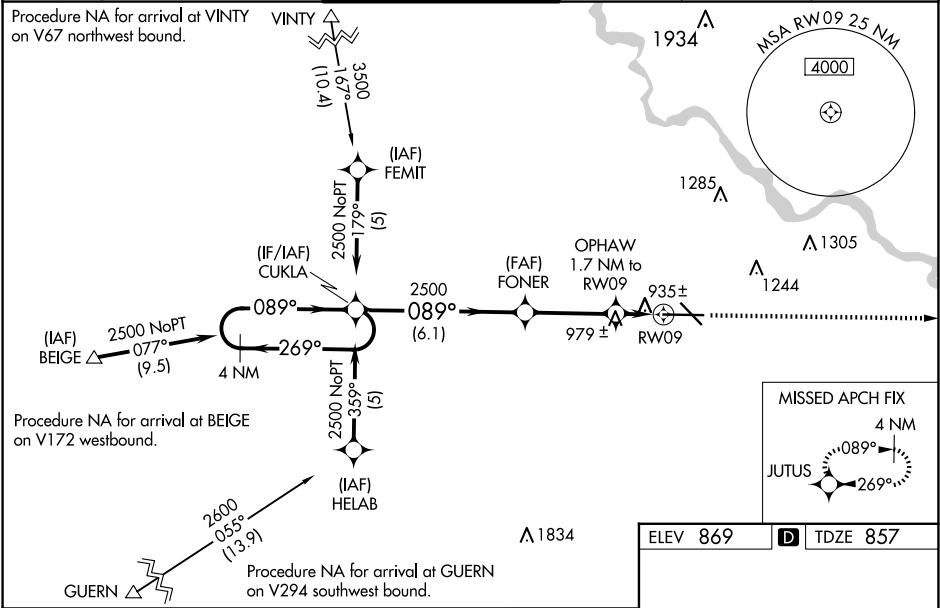
**RNAV (GPS) RWY 9**  
THE EASTERN IOWA (CID)

**⚠** Baro-VNAV NA when using Iowa City altimeter setting. For uncompensated Baro-VNAV systems, LNAV/VNAV NA below -16°C (4°F) or above 47°C (116°F). DME/DME RNP-0.3 NA. When local altimeter setting not received use Iowa City altimeter setting: increase LPV DA to 1121 feet; increase LNAV/VNAV DA to 1268 feet and all visibilities to RVR 5000; increase all MDA 80 feet; LNAV Cat C visibility to RVR 4000, and Circling Cat C and D visibility ¼ SM. For inop MALSRS increase LNAV Cat D visibility to RVR 6000. VDP NA with Iowa City altimeter setting. When using Iowa City altimeter setting; for inoperative MALSRS, increase LPV all Cats visibility to RVR 5000, LNAV Cat C visibility to RVR 6000 and LNAV Cat D visibility to 1½ miles.  
# RVR 1800 authorized with use of FD or AP or HUD to DA, NA when using Iowa City altimeter setting.

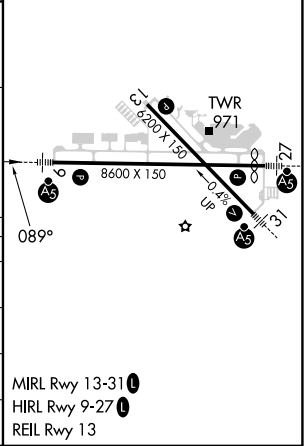
MALSRS

**MISSED APPROACH:**  
Climb to 2700 direct JUTUS and hold.

ATIS <b>124.15</b>	CEDAR RAPIDS APP CON★ <b>119.7 266.8</b>	CEDAR RAPIDS TOWER★ <b>118.7 (CTAF) 0 266.8</b>	GND CON <b>121.6</b>	CLNC DEL <b>125.45</b>	UNICOM <b>122.95</b>
-----------------------	---	--	-------------------------	---------------------------	-------------------------



VGSI and RNAV glidepath not coincident (VGSI Angle 3.00/TCH 60).					2700	JUTUS
4 NM Holding Pattern					*LNAV only	
2500 ← 269° 089° → 2500					*1440	
GP 3.00° TCH 49					1 NM	
CATEGORY	A	B	C	D		
LPV DA#	1057/24 200 (200-½)					
LNAV/VNAV DA	1204/40 347 (400-¾)					
LNAV MDA	1240/24 383 (400-½)			1240/50 383(400-1)		
CIRCLING	1280-1 411 (500-1)	1320-1 451 (500-1)	1560-2 691 (700-2)	1560-2¼ 691 (700-2¼)		



NC-3, 10 JUL 2025 to 07 AUG 2025

NC-3, 10 JUL 2025 to 07 AUG 2025