

WAAS CH 72902 W27A	APP CRS 269°	Rwy Idg 8175 TDZE 862 Apt Elev 869
--	------------------------	---

RNAV (GPS) RWY 27

THE EASTERN IOWA (CID)

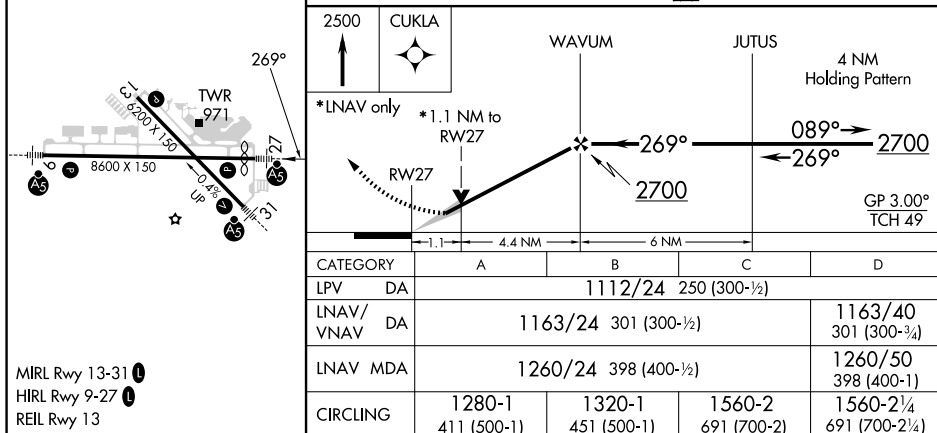
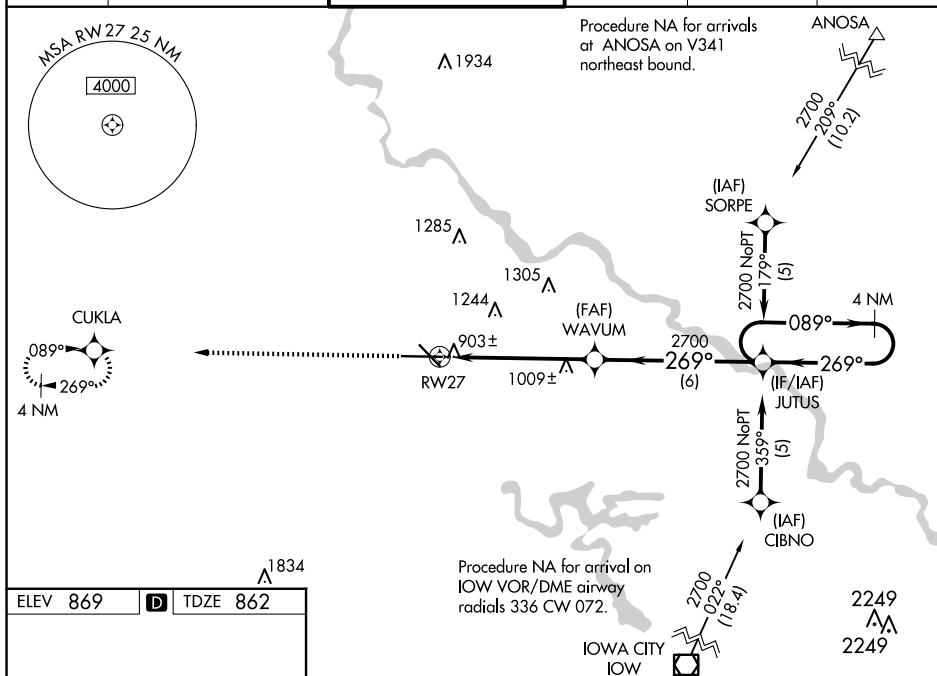
▼ Baro-VNAV NA when using Iowa City altimeter setting. For uncompensated Baro-VNAV systems, LNAV/VNAV NA below -1.6°C (4°F) or above 47°C (116°F). DME/DME RNP-0.3 NA.

▲ When local altimeter setting not received, use Iowa City altimeter setting: increase LPV DA to 1192 feet; increase LNAV/VNAV DA to 1243 feet; increase all MDAs 80 feet and Circling visibility Cat C and D ¼ SM. For inop MALSR increase LNAV/VNAV Cat D visibility to RVR 5000 and LNAV Cat D visibility to RVR 6000. VDP NA when using Iowa City altimeter setting.



MISSED APPROACH:
Climb to 2500 direct
CUKLA and hold.

ATIS 124.15	CEDAR RAPIDS APP CON* 119.7 266.8	CEDAR RAPIDS TOWER* 118.7 (CTAF) 0 266.8	GND CON 121.6	CLNC DEL 125.45	UNICOM 122.95
----------------	--------------------------------------	---	------------------	--------------------	------------------



CEDAR RAPIDS, IOWA

Amdt 1B 04NOV21

41°53'N-91°43'W

THE EASTERN IOWA (CID)
RNAV (GPS) RWY 27