

VORTAC MRB

112.1

Chan 58

APP CRS

290°

Rwy Idg
TDZE

N/A

Apt Elev

N/A

N/A

N/A

565

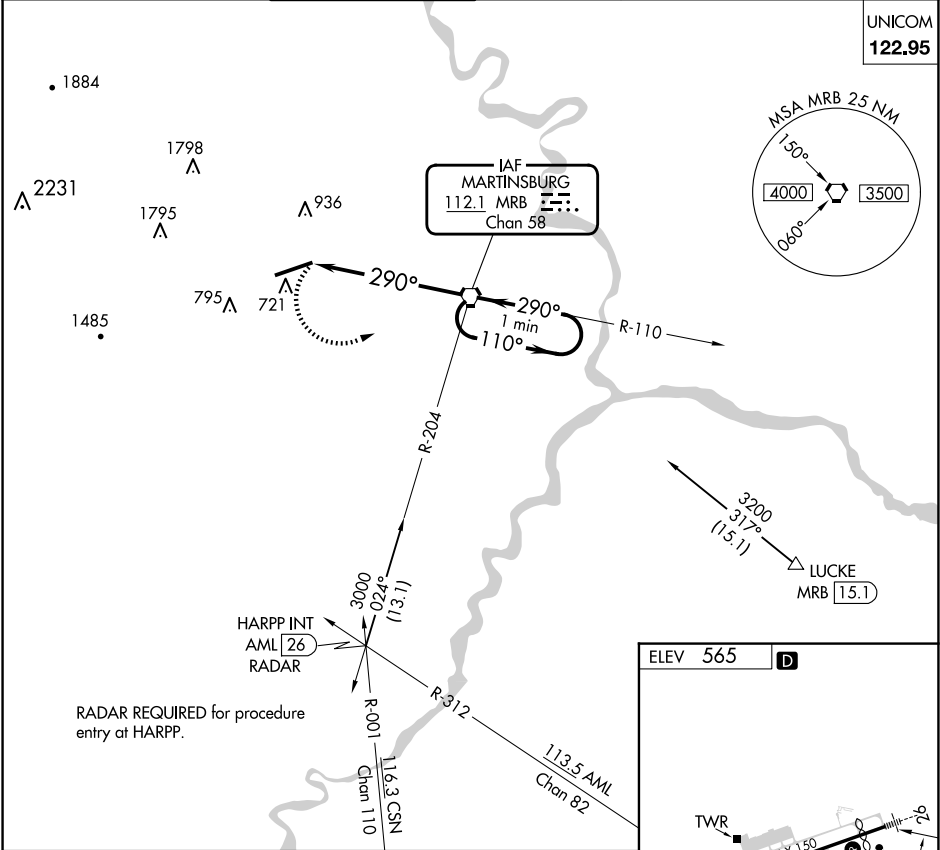
VOR-A

EASTERN WV RGNL/SHEPHERD FLD (MRB)

When local altimeter setting not received, use Hagerstown altimeter setting and increase all MDA 80 feet and Cat C/D visibility ¼ mile.

MISSED APPROACH: Climbing left turn to 3000 direct MRB VORTAC and hold, continue climb in hold to 3000.

ASOS 119.925	POTOMAC APP CON 126.825 239.025	MARTINSBURG TOWER ★ 124.3 (CTAF) 233.7	GND CON 121.8 257.65	CLNC DEL 121.8 257.65	CLNC DEL 132.075 269.075 (When twr closed)
-----------------	------------------------------------	---	-------------------------	--------------------------	--



3000

MRB

MRB VORTAC

One Minute Holding Pattern

110°

290°

3000

5.7 NM

CATEGORY	A	B	C	D	E	F
CIRCLING	1120-1 555 (600-1)	1240-1 675 (700-1)	1240-2 675 (700-2)	1260-2¼ 695 (700-2¼)	2140-3 1575 (1600-3)	FAF to MAP 5.7 NM
	Knots 60	90	120	150	180	
	Min:Sec 5:42	3:48	2:51	2:17	1:54	