

WAAS CH 53609 W26A	APP CRS 259°	Rwy Idg 7815 TDZE 548 Apt Elev 565
--	------------------------	---

RNAV (GPS) RWY 26

EASTERN WV RGNL/SHEPHERD FLD (MRB)

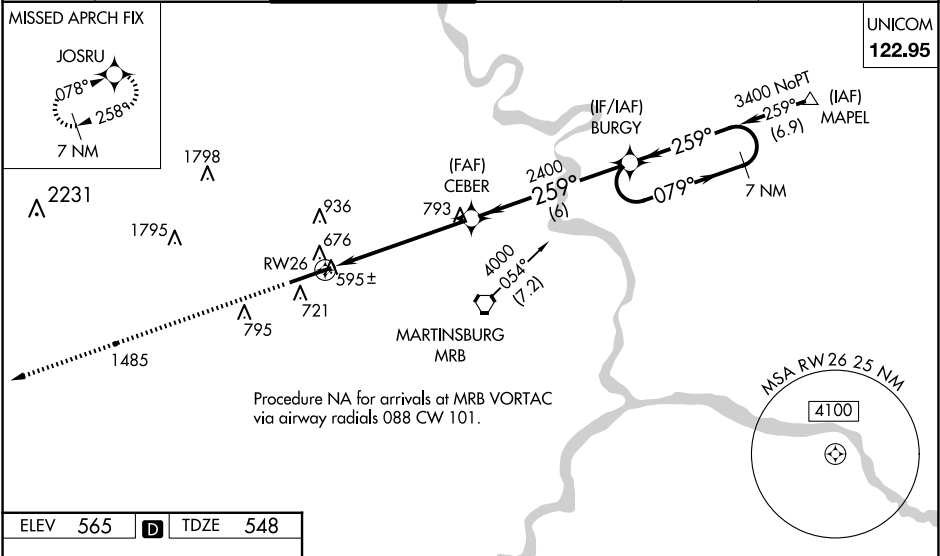
RNP APCH.

▼ Baro-VNAV NA when using Hagerstown altimeter setting. For uncompensated Baro-VNAV systems, LNAV/VNAV NA below -16°C (4°F) or above 54°C (130°F). VDP NA when using Hagerstown altimeter setting. When local altimeter setting not received, use Hagerstown altimeter setting and increase all DA 70 feet and all MDA 80 feet, increase LNAV/VNAV all Cats, LNAV Cats C, D, E and Circling Cat C and D visibility ¼ mile. For inoperative MALSR increase LPV Cat E visibility to ¾ mile, LNAV/VNAV Cat E to 2 ¼ mile, LNAV Cat E to 1 ½ mile. For inoperative MALSR when using Hagerstown altimeter setting increase LPV all Cats visibility to 1 mile, LNAV/VNAV Cat E visibility to 2 ½ mile and LNAV Cat E visibility to 1 ¾ mile.

MALSR

MISSED APPROACH:
Climb to 4100 direct JOSRU and hold, continue climb-in-hold to 4100.

ASOS 119.925	POTOMAC APP CON 126.825 239.025	MARTINSBURG TOWER ★ 124.3 (CTAF) 0 233.7	GND CON 121.8 257.65	CLNC DEL 121.8 257.65	CLNC DEL 132.075 269.075 (When twr closed)
------------------------	---	---	--------------------------------	---------------------------------	---



ELEV 565	D	TDZE 548
----------	----------	----------

4100	JOSRU	7 NM	Holding Pattern		
* LNAV only.	CEBER	2400	259°		
* 1.2 NM to RW26	2400	259°	3400		
1.2	4.4 NM	6 NM			
GP 3.00°	TCH 52				
CATEGORY	A	B	C	D	E
LPV DA	798-½		250 (300-½)		
LNAV/VNAV DA	1213-1¾		665 (700-1¾)		
LNAV MDA	980-½	432 (500-½)	980-¾	980-1	432 (500-1)
432 (500-¾)					
CIRCLING	1100-1	1240-1	1240-2	1260-2¼	2140-3
	535 (600-1)	675 (700-1)	675 (700-2)	695 (700-2¼)	1575 (1600-3)