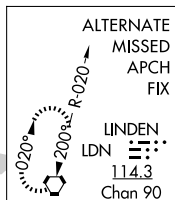


ILS or LOC RWY 26  
EASTERN WV RGNL/SHEPHERD FLD (MRB)

**MISSED APPROACH:** Climb to 1100 then climbing left turn to 3300 direct MRB VORTAC and hold, continue climb-in-hold to 3300.

UNICOM  
122.95

FAF to MAP 5.3 NM					
Knots	60	90	120	150	180
Min:Sec	5:18	3:32	2:39	2:07	1:46