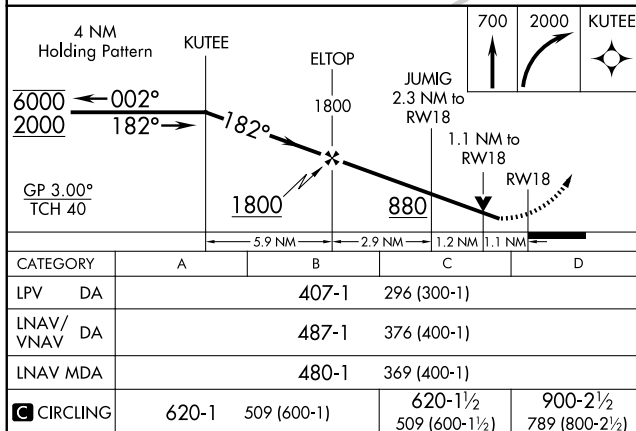
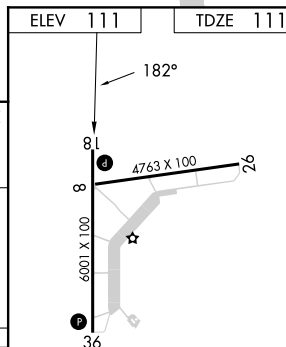
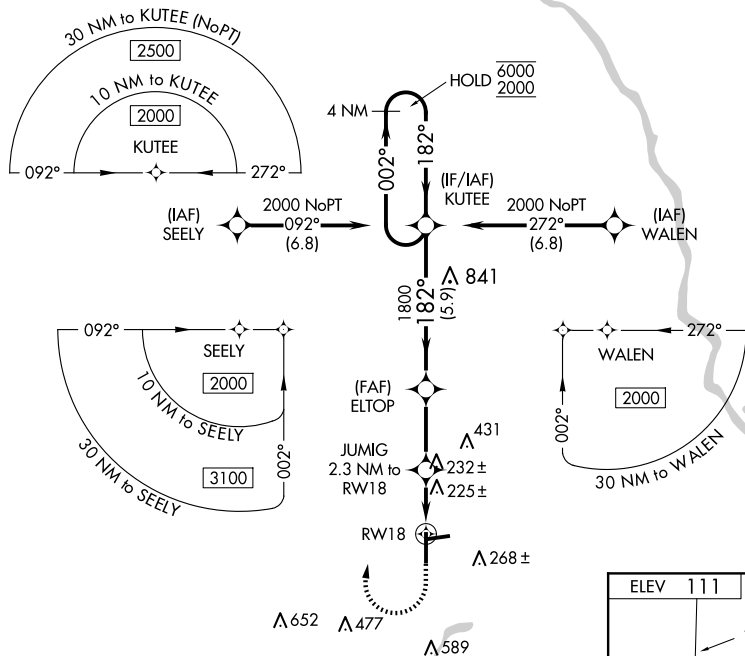


RNAV (GPS) RWY 18
MARIANNA MUNI (MAI)

▼ Baro-VNAV and VDP NA when using BGE altimeter setting. For uncompensated Baro-VNAV systems, LNAV/VNAV NA below -22°C or above 54°C. Circling Rwy 8, 26 NA at night.

▲ Rwy 18 helicopter visibility reduction below ¼ SM NA. When local altimeter setting not received, use BGE altimeter setting: increase LPV DA to 479 feet; increase LNAV/VNAV DA to 559 feet and all visibilities ¾ SM; increase all MDAs 80 feet and LNAV visibility Cots C and D ¾ SM, and Circling visibility Cot D ¼ SM.

MISSED APPROACH: Climb to 700 then climbing right turn to 2000 direct KUTEE and hold.

UNICOM
123.0 (CTAF) MIRL Rwy 18-36 **L**

SE-3, 10 JUL 2025 to 07 AUG 2025

SE-3. 10 JUL 2025 to 07 AUG 2025