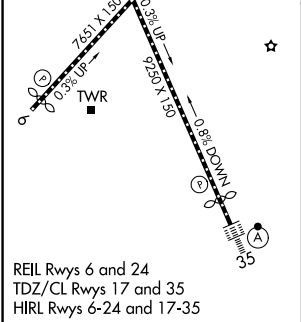
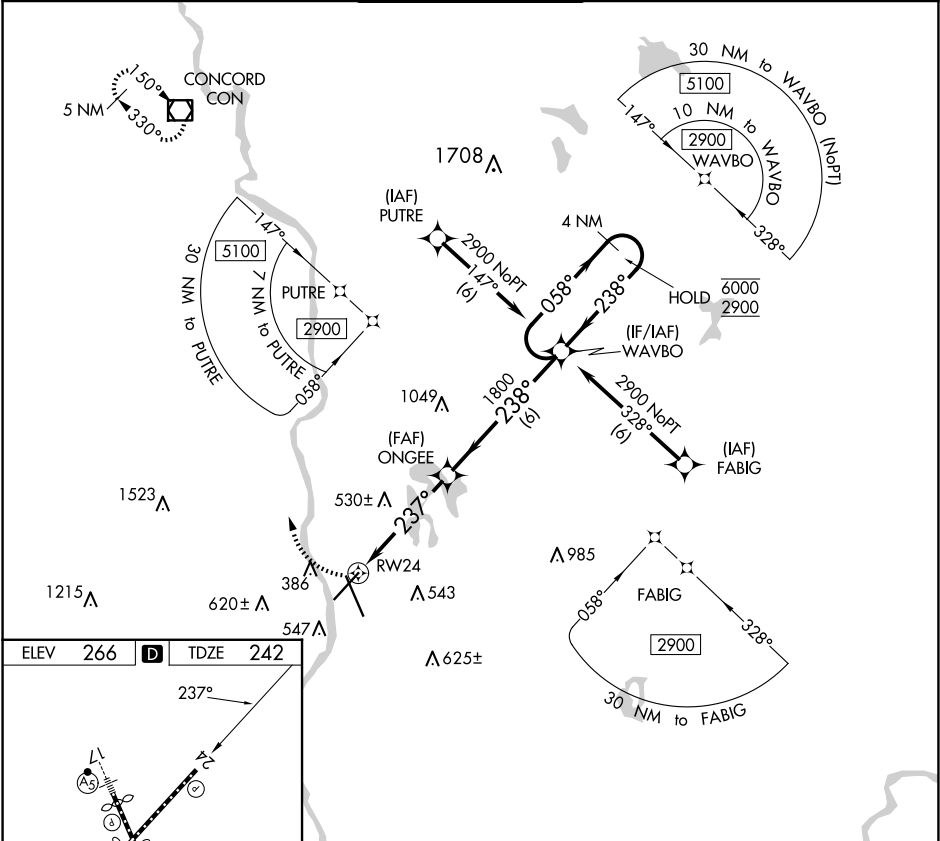


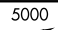

APP CRS	Rwy Ldg	6850
237°	TDZE	242
	Apt Elev	266

RNAV (GPS) RWY 24
MANCHESTER BOSTON RGNL (MHT)

RNP APCH.	MISSED APPROACH: Climbing right turn to 5000 direct CON VOR/DME and hold. Continue climb-in-hold to 5000.
Rwy 24 helicopter visibility reduction below 4000 NA.	

ATIS 119.55	BOSTON APP CON 124.9 269.075	MANCHESTER TOWER 121.3 239.025	GND CON 121.9	CLNC DEL 135.9
----------------	---------------------------------	-----------------------------------	------------------	-------------------



5000 		CON 			
---	--	--	--	--	--

NE-1, 10 JUL 2025 to 07 AUG 2025

NE-1, 10 JUL 2025 to 07 AUG 2025