

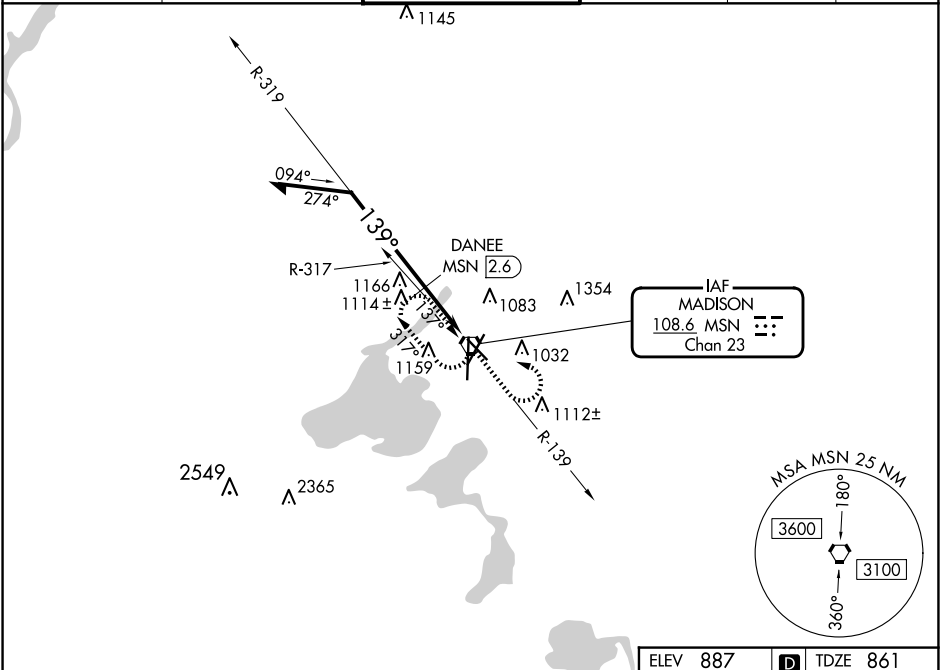
VORTAC MSN	Rwy Idg	5369
108.6	TDZE	861
Chan 23	APP CRS	139°
	Apt Elev	887

VOR RWY 14
DANE COUNTY RGNL/TRUAX FLD (MSN)

⚠ Rwy 14 helicopter visibility reduction below ¾ SM NA.

⚠ MISSED APPROACH: Climb to 2800 on MSN VORTAC R-139 then left turn direct MSN VORTAC and hold.

ATIS 124.65 278.3	MADISON APP CON ★ 135.45 343.7	MADISON TOWER ★ 119.3 (CTAF) 0 257.8	GND CON 121.9 348.6	CLNC DEL 121.625	UNICOM 122.95
----------------------	-----------------------------------	---	------------------------	---------------------	------------------



Remain within 10 NM

MSN VORTAC

2800

DANEE MSN 2.6

139°

1700

3.00°

TCH 45

0.9 NM

1.5 NM

0.1

CATEGORY	A	B	C	D
S-14	1700-1 839 (900-1)	1700-1¼ 839 (900-1¼)	1700-2½	839 (900-2½)
C CIRCLING	1700-1¼	813 (900-1¼)	1700-2½ 813 (900-2½)	1700-2¾ 813 (900-2¾)
DANEE FIX MINIMUMS				
S-14	1380-1	519 (500-1)	1380-1¾	519 (500-1¾)
C CIRCLING	1680-1	793 (800-1)	1680-2¼ 793 (800-2¼)	1680-2½ 793 (800-2½)

ELEV 887

TDZE 861

MSN

139°

TWR 964

36

81

27

32

3000 X 150

2200 X 150

3824 X 150

60 4% UP

HIRL all Rwys 0

REIL Rws 3, 14 and 32 0

EC-3, 10 JUL 2025 to 07 AUG 2025

EC-3, 10 JUL 2025 to 07 AUG 2025