

WAAS CH 58021 W32A	APP CRS 320°	Rwy Idg 5846 TDZE 862 Apt Elev 887
--	------------------------	---

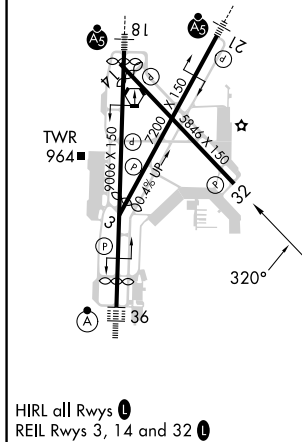
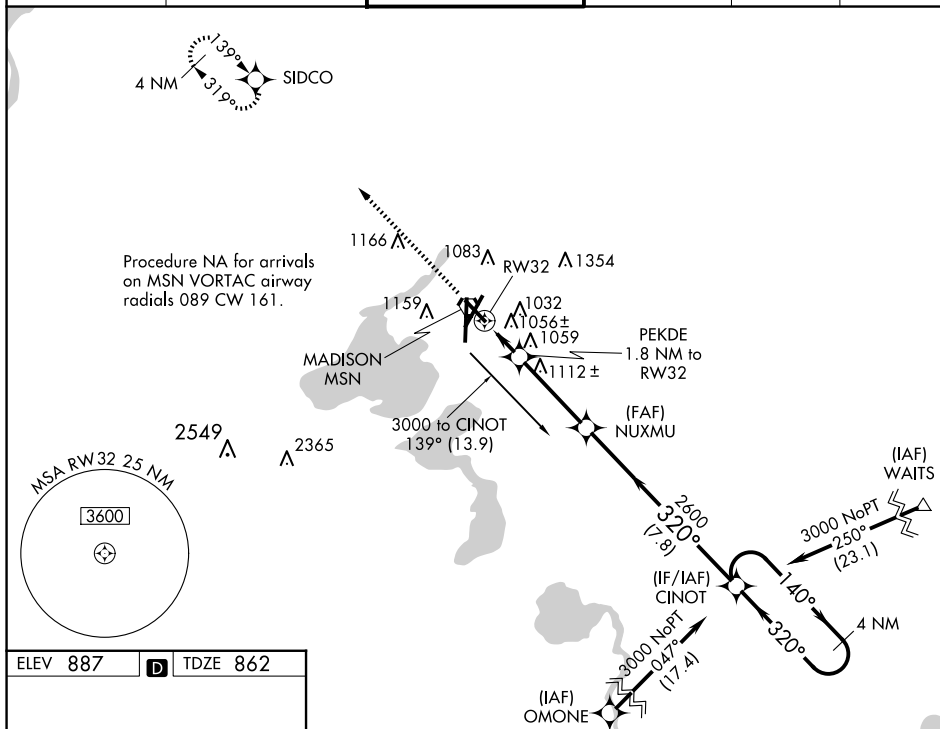
RNAV (GPS) RWY 32

DANE COUNTY RGNL/TRUAX FLD (MSN)

T For uncompensated Baro-VNAV systems, LNAV/VNAV NA below -19°C (-2°F) or above 54°C (130°F). DME/DME RNP-0.3 NA. Helicopter visibility reduction below $\frac{3}{4}$ SM NA.

MISSED APPROACH:
Climb to 3200 direct
SIDCO and hold.

ATIS 124.65 278.3	MADISON APP CON ★ 135.45 343.7	MADISON TOWER ★ 119.3 (CTAF) 0 257.8	GND CON 121.9 348.6	CLNC DEL 121.625	UNICOM 122.95
----------------------	-----------------------------------	---	------------------------	---------------------	------------------

[illegible]