

WAAS CH <b>56421</b> <b>W10A</b>	APP CRS <b>102°</b>	Rwy Idg <b>4184</b> TDZE <b>430</b> Apt Elev <b>437</b>
--	------------------------	---

RNAV (GPS) RWY 10

MACON DOWNTOWN (MAC)

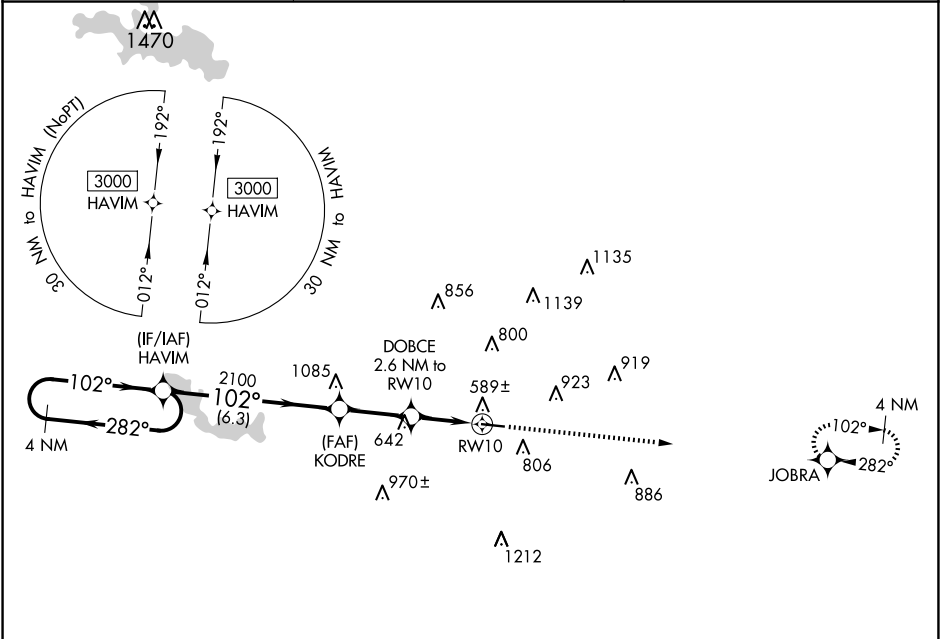
▼

NA

Baro-VNAV NA. DME/DME RNP-0.3 NA. Use Middle Georgia altimeter setting, when not received, use Robbins AFB altimeter setting and increase LPV DA to 726 feet, increase LNAV/VNAV DA to 833 feet and increase all MDA 20 feet.

MISSED APPROACH:  
Climb to 3000 direct  
JOBRA and hold.

MCN ASOS <b>120.775</b>	ATLANTA APP CON ★ <b>124.2 279.6</b>	UNICOM <b>123.0 (CTAF) 0</b>
----------------------------	---	---------------------------------



ELEV 437						D		TDZE 430	
<div>4 NM Holding Pattern HAVIM</div> <div>3000 ← 282° 102° →</div> <div>GP 3.00° TCH 40</div> <div>2100</div> <div>102°</div> <div>KODRE 2100</div> <div>DOBCE 2.6 NM to RW10</div> <div>RW10</div> <div>2.6 NM</div> <div>2.6 NM</div> <div>6.3 NM</div> <div>3000</div> <div>JOBRA</div> <div>*LNAV only.</div> <div>508</div> <div>4694 X 100</div> <div>28</div> <div>102°</div>									