

LUBBOCK, TEXAS

AL-241 (FAA)

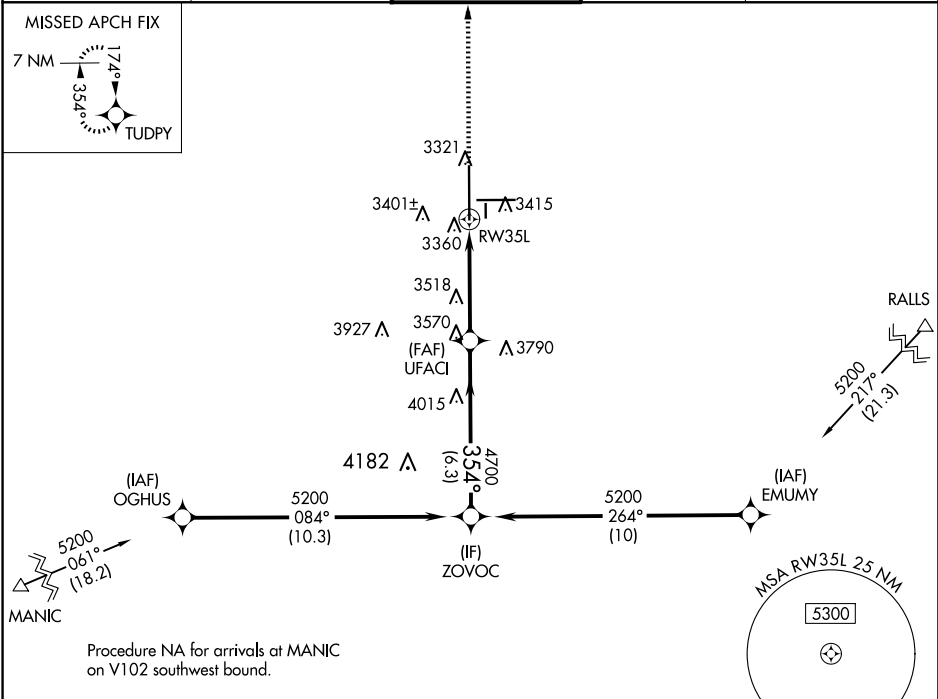
23222

WAAS CH <b>50128</b> <b>W35A</b>	APP CRS <b>354°</b>	Rwy Idg TDZE <b>3254</b> Apt Elev <b>3282</b>
--	------------------------	---

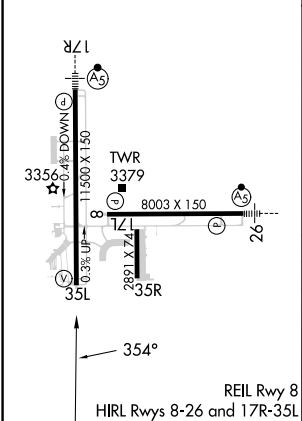
**RNAV (GPS) Y RWY 35L**  
LUBBOCK PRESTON SMITH INTL (LBB)

RNP APCH. ▼ For uncompensated Baro-VNAV systems, LNAV/VNAV NA below -12° C or above 51° C. ▲ MISSED APPROACH: Climb to 5400 direct TUDPY and hold.
--

ATIS <b>125.3 270.275</b>	LUBBOCK APP CON <b>119.2 351.8</b>	LUBBOCK TOWER <b>120.5 239.3</b>	GND CON <b>121.9 348.6</b>	CLNC DEL <b>125.8 281.55</b>
------------------------------	---------------------------------------	-------------------------------------	-------------------------------	---------------------------------



ELEV 3282	D	TDZE 3254
-----------	---	-----------



5400 ↑		TUDPY ✦		ZOVOC	
* LNAV only.		* 1.6 NM to RW35L		5200	
RW35L		UFACI 4700		354° 4700	
1.6		2.8 NM		6.3 NM	
				GP 3.00° TCH 54	
CATEGORY	A	B	C	D	E
LPV DA	3454-3/4 200 (200-3/4)				
LNAV/ VNAV DA	3673-1 1/4 419 (400-1 1/4)				
LNAV MDA	3820-1	566 (600-1)	3820-1 5/8	566 (600-1 5/8)	
CIRCLING	3820-1	538 (600-1)	3880-1 5/8 598 (600-1 5/8)	3940-2 658 (700-2)	4100-3 818 (900-3)

LUBBOCK, TEXAS  
Amdt 2C 21MAY20

33°40'N-101°49'W

LUBBOCK PRESTON SMITH INTL (LBB)  
**RNAV (GPS) Y RWY 35L**

SC-2, 10 JUL 2025 to 07 AUG 2025

SC-2, 10 JUL 2025 to 07 AUG 2025