

WAAS CH <b>40028</b> <b>W17A</b>	APP CRS <b>174°</b>	Rwy Idg TDZE <b>3282</b> Apt Elev <b>3282</b>
--	------------------------	---

RNAV (GPS) Y RWY 17R  
LUBBOCK PRESTON SMITH INTL (LBB)

RNP APCH

▼

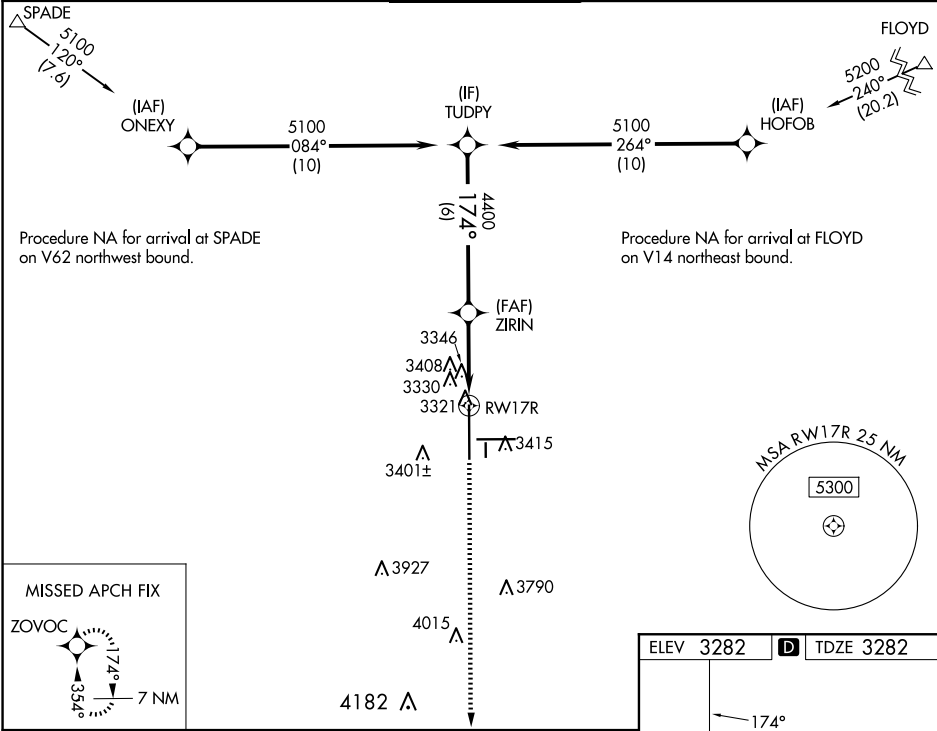
▲

For uncompensated Baro-VNAV systems, LNAV/VNAV NA below -12°C or above 51°C.  
For inop ALS increase LPV Cat E visibility to RVR 4000, LNAV/VNAV Cat E visibility to RVR 5000 and LNAV Cat A/B visibility to RVR 5500 and Cat C/D/E visibility to RVR 6000.  
\*\*RVR 1800 authorized with use of FD or AP or HUD to DA.

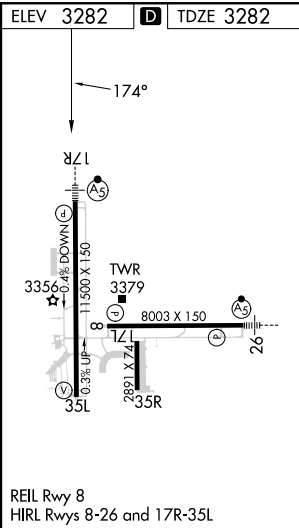
MALSR

MISSED APPROACH:  
Climb to 5400 direct  
ZOVOC and hold.

ATIS <b>125.3 270.275</b>	LUBBOCK APP CON <b>119.2 351.8</b>	LUBBOCK TOWER <b>120.5 239.3</b>	GND CON <b>121.9 348.6</b>	CLNC DEL <b>125.8 281.55</b>
------------------------------	---------------------------------------	-------------------------------------	-------------------------------	---------------------------------



<p>TUDPY</p> <p>VGSI and RNAV glidepath not coincident (VGSI Angle 3.00/TCH 69).</p> <p>5400</p> <p>ZOVOC</p> <p>5100</p> <p>174°</p> <p>GP 3.00° TCH 53</p> <p>4400</p> <p>4400</p> <p>*1 NM to RW17R</p> <p>*LNAV only.</p> <p>RW17R</p> <p>6 NM</p> <p>2.3 NM</p> <p>1 NM</p>					
CATEGORY	A	B	C	D	E
LPV DA **	3482/24 200 (200-½)				
LNAV/ VNAV DA	3591/24 309 (400-½)				
LNAV MDA	3700/24	418 (500-½)	3700/40	418 (500-¾)	
CIRCLING	3720-1 438 (500-1)	3740-1 458 (500-1)	3880-1½ 598 (600-1½)	3940-2 658 (700-2)	4100-3 818 (900-3)



SC-2, 10 JUL 2025 to 07 AUG 2025

SC-2, 10 JUL 2025 to 07 AUG 2025