

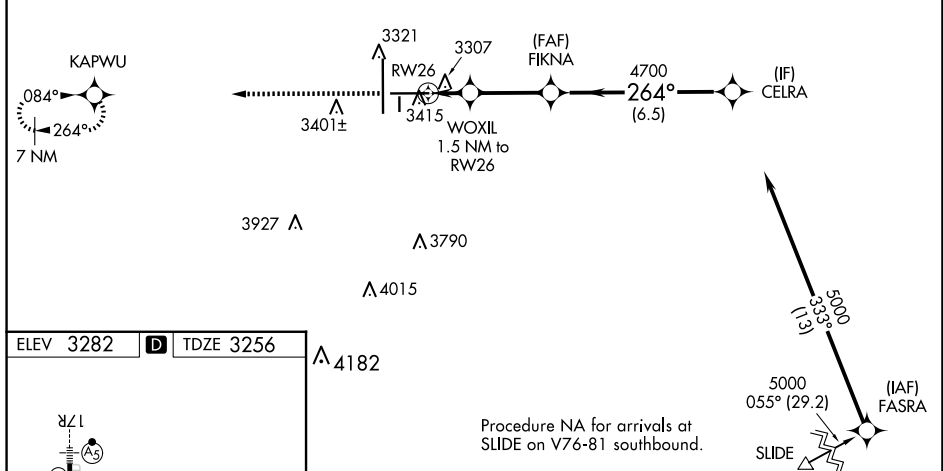
23222

RNAV (GPS) RWY 26
LUBBOCK PRESTON SMITH INTL (LBB)

▼ For uncompensated Baro-VNAV systems, LNAV/VNAV NA below -10°C or above 52°C.
▲ For inop ALS, increase LPV Cat E visibility to RVR 4000; increase LNAV/VNAV Cat E visibility to RVR 5000; and increase LNAV Cat C/D/E visibilities to RVR 4500.
**RVR 1800 authorized with use of FD or AP or HUD to DA.

MISSED APPROACH:
Climb to 5200 direct
KAPWU and hold.

The diagram shows the FLOYD VORTAC at the top right, with a 5000-foot MSL and a 19.5° (13.1) glide slope. A procedure NA for arrivals at FLOYD on V14 northeast bound is indicated. A 5300-foot MSL RW 26 25 NM is shown on the left. A 5000-foot MSL and 19.5° (13.1) glide slope are also shown for the FLOYD VORTAC.



LUBBOCK, TEXAS
Amdt 3A 20JUN19

LUBBOCK PRESTON SMITH INTL (LBB)
RNAV (GPS) RWY 26

SC-2, 10 JUL 2025 to 07 AUG 2025