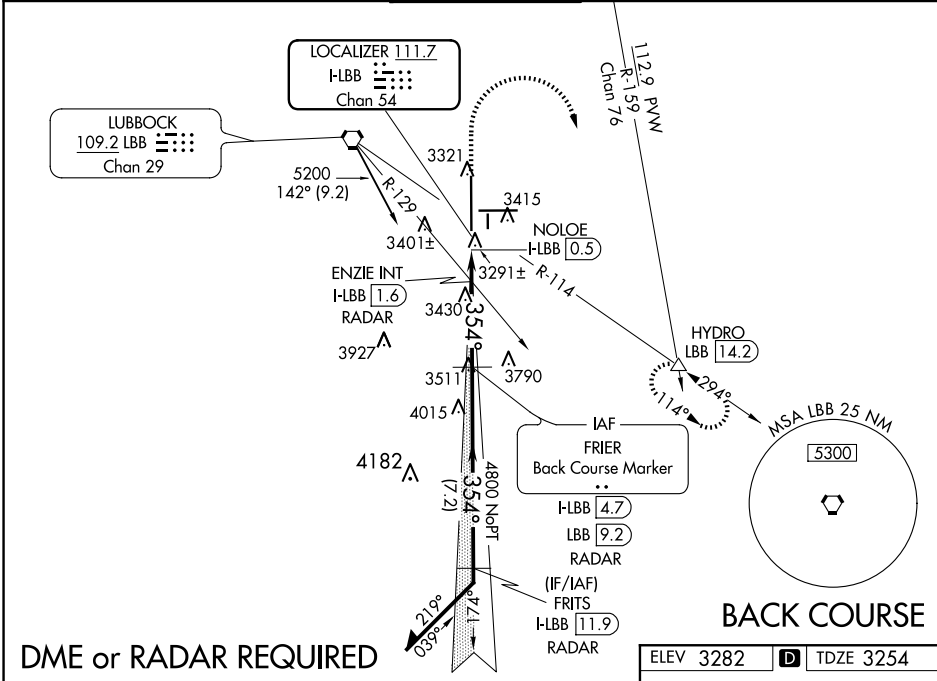


LOC I-LBB 111.7 Chan 54	APP CRS 354°	Rwy Idg TDZE 3254 Apt Elev 3282
---	------------------------	---

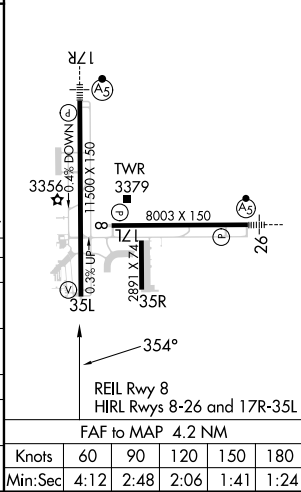
LOC BC RWY 35L
LUBBOCK PRESTON SMITH INTL (LBB)

MISSED APPROACH: Climb to 4000 then climbing right turn to 5200 on heading 170° and on LBB VORTAC R-114 to HYDRO INT/LBB 14.2 DME and hold.	
---	--

ATIS 125.3 270.275	LUBBOCK APP CON 119.2 351.8	LUBBOCK TOWER 120.5 239.3	GND CON 121.9 348.6	CLNC DEL 125.8 281.55
------------------------------	---------------------------------------	-------------------------------------	-------------------------------	---------------------------------



4000	5200	HYDRO	FRIER BCM	Remain within 10 NM
↑	hdg 170°	LBB R-114	I-LBB 4.7 RADAR	
ENZIE INT I-LBB 1.6 RADAR				
NOLOE I-LBB 0.5				
Disregard glide slope indications.				
CATEGORY	A	B	C	D
S-35L	3820-1	566 (600-1)	3820-1½	566 (600-1½)
CIRCLING	3820-1	538 (600-1)	3880-1½	3940-2
ENZIE FIX MINIMUMS				
S-35L	3560-1	306 (300-1)	3560-7/8	306 (300-7/8)
CIRCLING	3720-1	3740-1	3880-1½	3940-2
438 (500-1) 458 (500-1) 598 (600-1½) 658 (700-2)				



SC-2, 10 JUL 2025 to 07 AUG 2025

SC-2, 10 JUL 2025 to 07 AUG 2025