

LOC I-DT 111.9	APP CRS 264°	Rwy Idg TDZE Apt Elev	8003 3255 3282
--------------------------	------------------------	-----------------------------	---

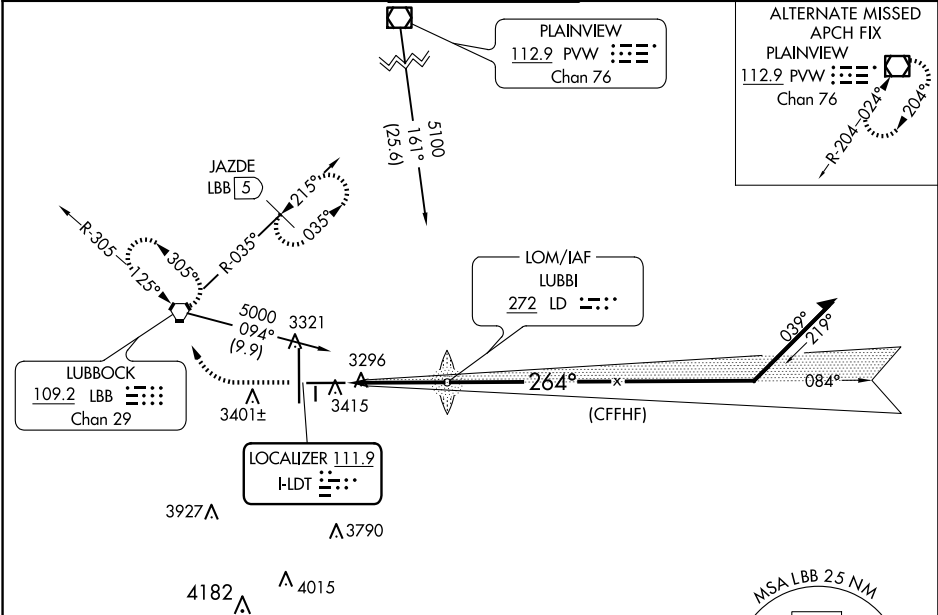
ILS or LOC RWY 26
LUBBOCK PRESTON SMITH INTL (LBB)

⚠ For inop MALSR, increase S-ILS 26 Cat E visibility to RVR 4000 and increase S-LOC 26 Cat C/D/E visibility to RVR 4500.
#RVR 1800 authorized with use of FD or AP or HUD to DA.

MALSR

MISSED APPROACH: Climb to 3800 then climbing right turn to 4800 direct LBB VORTAC and hold (TACAN aircraft climb to 3800 then climbing right turn to 5100 on heading 300° and on LBB VORTAC R-035 to JAZDE/LBB 5 DME and hold northeast left turn 215° inbound).

ATIS 125.3 270.275	LUBBOCK APP CON 119.2 351.8	LUBBOCK TOWER 120.5 239.3	GND CON 121.9 348.6	CLNC DEL 125.8 281.55
------------------------------	---------------------------------------	-------------------------------------	-------------------------------	---------------------------------



ELEV 3282 **D** TDZE 3255

REIL Rwy 8
HIRL Rwy 8-26 and 17R-35L
FAF to MAP 3.7 NM

Knots	60	90	120	150	180
Min:Sec	3:42	2:28	1:51	1:29	1:14

ADF OR RADAR REQUIRED

Diagram details: Approach path from 4700 ft (3.7 NM) to 4500 ft (3.00° TCH 52). Altitudes: 3800, 4800, 4477, 4700, 4500, 3720-1, 3740-1, 3880-1½, 3940-2, 4100-3.

CATEGORY	A	B	C	D	E
S-ILS 26	#3455/24 200 (200-½)				
S-LOC 26	3560/24 305 (300-½)				
<input checked="" type="checkbox"/> CIRCLING	3720-1 438 (500-1)	3740-1 458 (500-1)	3880-1½ 598 (600-1½)	3940-2 658 (700-2)	4100-3 818 (900-3)

SC-2, 10 JUL 2025 to 07 AUG 2025

SC-2, 10 JUL 2025 to 07 AUG 2025