

WAAS CH 70709 W35D	APP CRS 350°	Rwy ldg TDZE 479 Apt Elev 501
--	------------------------	---

RNAV (GPS) Y RWY 35R

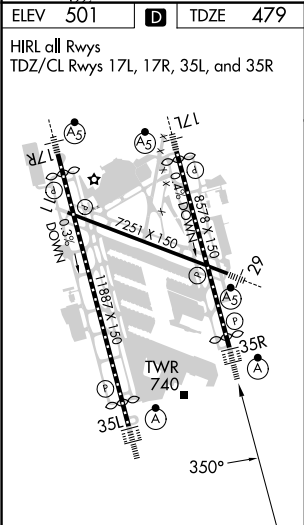
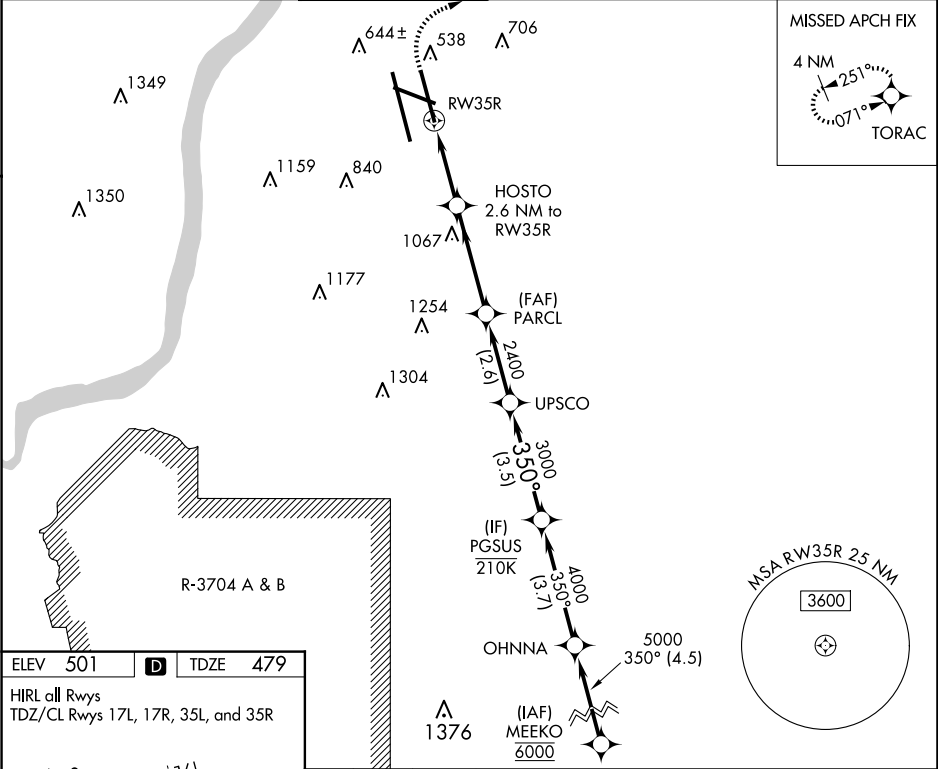
LOUISVILLE MUHAMMAD ALI INTL (SDF)

RNP APCH - GPS.

Simultaneous approach authorized. LNAV procedure NA during simultaneous operations.
Use of FD or AP required during simultaneous operations. Circling Rwy 11 NA at night.
For uncompensated Baro-VNAV systems, LNAV/VNAV NA below -13°C or above 54°C.

ALSF-2 MISSED APPROACH:
Climb to 1600 then climbing right turn to 4000 direct TORAC and hold.

D-ATIS 118.725	LOUISVILLE APP CON 132.075 327.0	LOUISVILLE TOWER 124.2 257.8	GND CON 121.7 348.6	CLNC DEL 126.1 275.8	CPDLC
--------------------------	--	--	-------------------------------	--------------------------------	-------



1600 4000 TORAC

VGSI and RNAV glidepath not coincident
(VGSI Angle 3.00/TCH 71).

PGSUS 4000

350°

3000

2400

1360

1.4 NM to RW35R

2.6 NM to RW35R

3.3 NM

2.6 NM

3.5 NM

GP 3.00° TCH 60

CATEGORY	A	B	C	D
LPV DA	679/18		200 (200-½)	
LNAV/VNAV DA	901/40		422 (400-¾)	
LNAV MDA	1000/24	521 (500-½)	1000/55	521 (500-1)
CIRCLING	1040-1 539 (600-1)	1140-1 639 (700-1)	1160-1¾ 659 (700-1¾)	1400-3 899 (900-3)