

WAAS CH 93643 W29A	APP CRS 296°	Rwy Idg 7250 TDZE 480 Apt Elev 501
--	------------------------	---

RNAV (GPS) Y RWY 29

LOUISVILLE MUHAMMAD ALI INTL (SDF)

RNP APCH - GPS.

T Rwy 29 helicopter visibility reduction below RVR 4000 NA. Circling Rwy 11
A NA at night. For uncompensated Baro-VNAV systems, LNAV/VNAV NA
 below -13°C or above 54°C. For open ALS, increase LPV all Cats visibility
 to RVR 4500 and LNAV Cats A/B visibility to RVR 5500.


MALSR

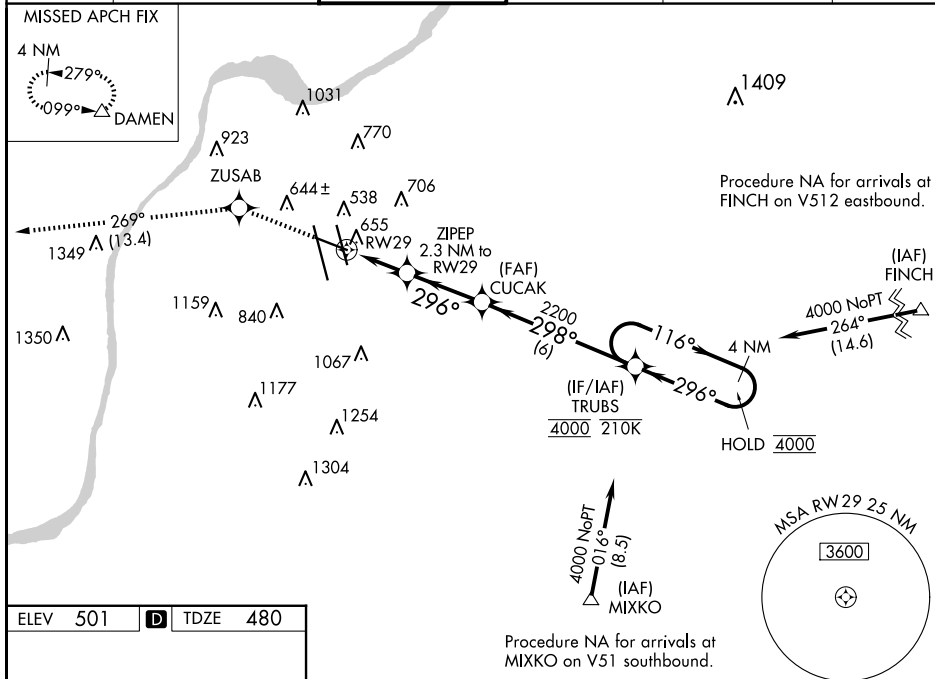
MISSED APPROACH: Climb to 4000 direct ZUSAB and on track 269° to DAMEN and hold.

D-ATIS 118.725	LOUISVILLE APP CON 132.075 327.0	LOUISVILLE TOWER 124.2 257.8	GND CON 121.7 348.6	CLNC DEL 126.1 275.8	CPDLC
-------------------	-------------------------------------	---------------------------------	------------------------	-------------------------	-------

MISSED APCH FIX



099°  DAMEN

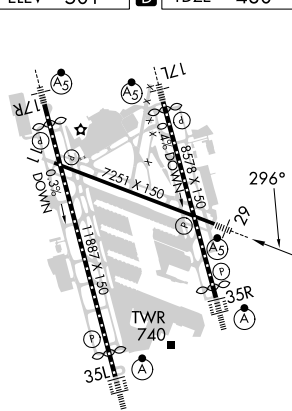


Procedure NA for arrivals at
MIXKO on V51 southbound.

ELEV	501	D	TDZE	480
------	-----	----------	------	-----

P

TDZE 480



HIRL all Rwys
TDZ/CL Rwys 17L, 17R, 35L and 35R

4000	ZUSAB	tr 269°	DAMEN	<p>CUCAK 2200</p> <p>TRUBS</p> <p>4 NM Holding Pattern</p> <p>116° → 4000</p> <p>← 296°</p> <p>ZIPEP 2.3 NM to RW29</p> <p>1.2 NM to RW29</p> <p>RW29</p> <p>1280</p> <p>296°</p> <p>2200</p> <p>2.9 NM</p> <p>6 NM</p> <p>GP 3.00° TCH 59</p>					
CATEGORY		A		B		C		D	
LPV	DA			761/40		281 {300-¾}			
UNAV/ VNAV	DA			920/40		440 {500-¾}			
UNAV	MDA			920/40		440 {500-¾}			
C CIRCLING		1040-1 539 {600-1}		1140-1 639 {700-1}		1160-1¼ 659 {700-1¼}		1400-3 899 {900-3}	

RNAV (GPS) Y RWY 29