

LOC/DME I-PKI <b>111.95</b> Chan <b>56 (Y)</b>	APP CRS <b>170°</b>	Rwy Idg TDZE <b>499</b> Apt Elev <b>501</b>
--	------------------------	---

ILS or LOC RWY 17L

LOUISVILLE MUHAMMAD ALI INTL (SDF)

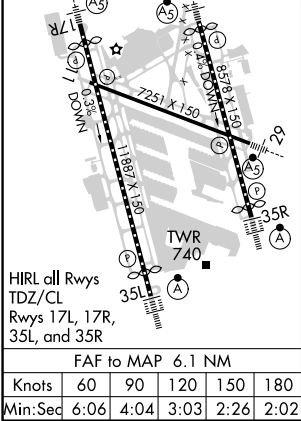
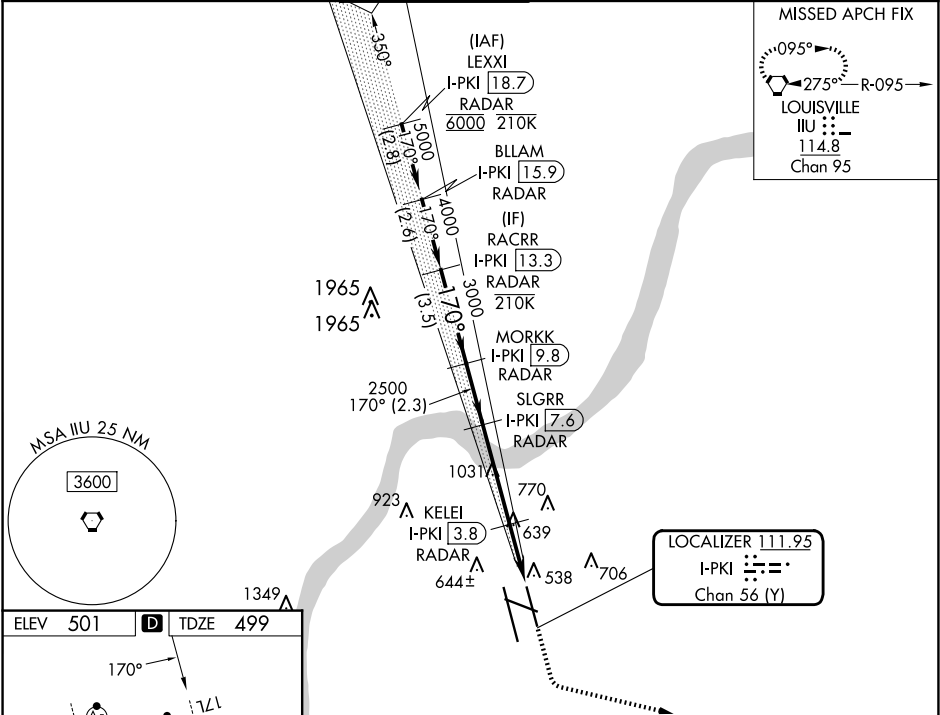
DME or RADAR required. RADAR required for procedure entry.

Simultaneous approach authorized. Circling Rwy 11 NA at night.  
For inop ALS, increase S-LOC 17L Cat C/D visibility to 1 3/4 SM.

MALSR

MISSED APPROACH: Climb to 1000 then climbing left turn to 3000 direct IIU VORTAC, continue climb-in-hold to 3000.

D-ATIS <b>118.725</b>	LOUISVILLE APP CON <b>132.075 327.0</b>	LOUISVILLE TOWER <b>124.2 257.8</b>	GND CON <b>121.7 348.6</b>	CLNC DEL <b>126.1 275.8</b>	CPDLC
--------------------------	--	--	-------------------------------	--------------------------------	-------



RACRR I-PKI 13.3 RADAR		VGSi and ILS glidepath not coincident (VGSi Angle 3.00/TCH 63).		1000	3000	IIU
MORKK I-PKI 9.8 RADAR		SLGRR I-PKI 7.6 RADAR				

SE-1, 10 JUL 2025 to 07 AUG 2025

SE-1, 10 JUL 2025 to 07 AUG 2025