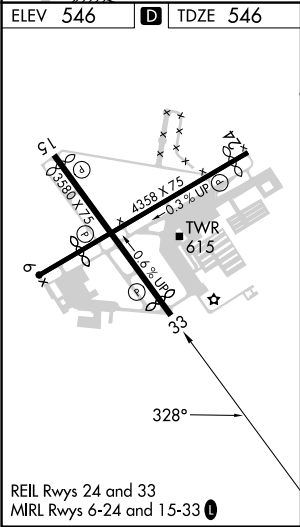
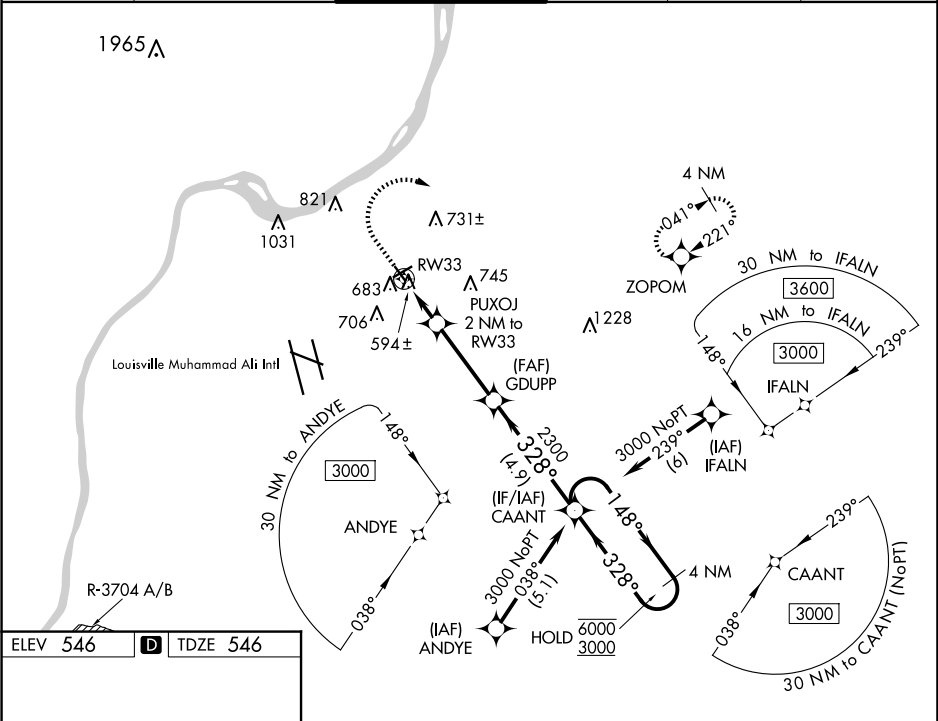


WAAS CH 99526 W33A	APP CRS 328°	Rwy Idg TDZE 546 Apt Elev 546	3125 546
--	------------------------	---	---------------------------

RNAV (GPS) RWY 33

BOWMAN FLD (LOU)

RNP APCH - GPS.			MISSED APPROACH: Climb to 1000 then climbing right turn to 3000 direct ZOPOM and hold.		
Rwy 33 helicopter visibility reduction below 1 SM NA. When local altimeter setting not received, use Louisville Muhammad Ali Intl altimeter setting. Straight-in Rwy 33 NA at night, Circling Rwy 6, 15, 33 NA at night.					
ATIS 124.15	LOUISVILLE APP CON 132.075 327.0	BOWMAN TOWER★ 119.5 (CTAF) 257.625	GND CON 121.8	CLNC DEL 118.9	UNICOM 122.95



1000 3000 ZOPOM		VGSI and descent angles not coincident (VGSI Angle 3.25/TCH 45).		4 NM Holding Pattern
PUXOJ 2 NM to RW33		GDUPP		CAANT
RW33		328° 2300		148° 6000
2 NM		3.4 NM		4.9 NM
CATEGORY	A	B	C	D
LP MDA	860-1	314 (400-1)	NA	
LNAV MDA	920-1	374 (400-1)	NA	
CIRCLING	1060-1 514 (600-1)	1080-1 534 (600-1)	NA	