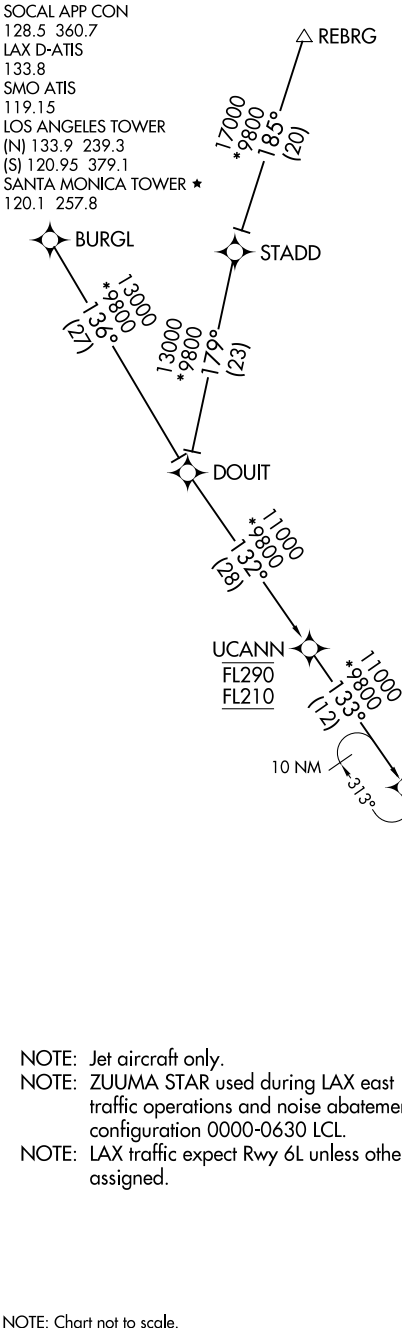


ZUUMA FOUR ARRIVAL (RNAV)

AL-237 (FAA)

LOS ANGELES, CALIFORNIA

SOCAL APP CON  
128.5 360.7  
LAX D-ATIS  
133.8  
SMO ATIS  
119.15  
LOS ANGELES TOWER  
(N) 133.9 239.3  
(S) 120.95 379.1  
SANTA MONICA TOWER ★  
120.1 257.8



NOTE: Jet aircraft only.  
NOTE: ZUUMA STAR used during LAX east traffic operations and noise abatement configuration 0000-0630 LCL.  
NOTE: LAX traffic expect Rwy 6L unless otherwise assigned.

NOTE: Chart not to scale.

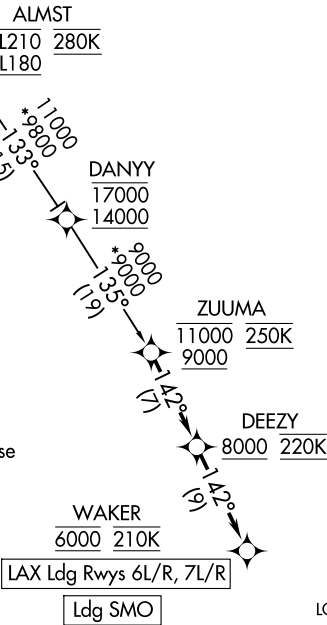
ARRIVAL ROUTE DESCRIPTION  
BURGL TRANSITION (BURGL.ZUUMA4)  
DOUIT TRANSITION (DOUIT.ZUUMA4)  
REBRG TRANSITION (REBRG.ZUUMA4)

LANDING LAX RUNWAYS 6L/R, 7L/R: From ZUUMA on track 142° to cross DEEZY at or above 8000 and at 220K, then on track 142° to cross WAKER at 6000 and at 210K. Expect ILS or LOC RWY 6L approach or RADAR vectors to final approach course.

LANDING SMO: From ZUUMA on track 142° to cross DEEZY at or above 8000 and at 220K, then on track 142° to cross WAKER at 6000 and at 210K. Expect RNAV (GPS) Y RWY 3 approach.

LOST COMMUNICATIONS  
LANDING LAX: Proceed on the RNAV (RNP) Z RWY 6L or ILS or LOC RWY 6L approach.  
LANDING SMO: Proceed on the RNAV (GPS) Y RWY 3 approach.

RNAV 1 - DME/DME/IRU or GPS.  
RADAR required.



ZUUMA FOUR ARRIVAL (RNAV)