

SW-3, 10 JUL 2025 to 07 AUG 2025

TOP ALTITUDE:
14000

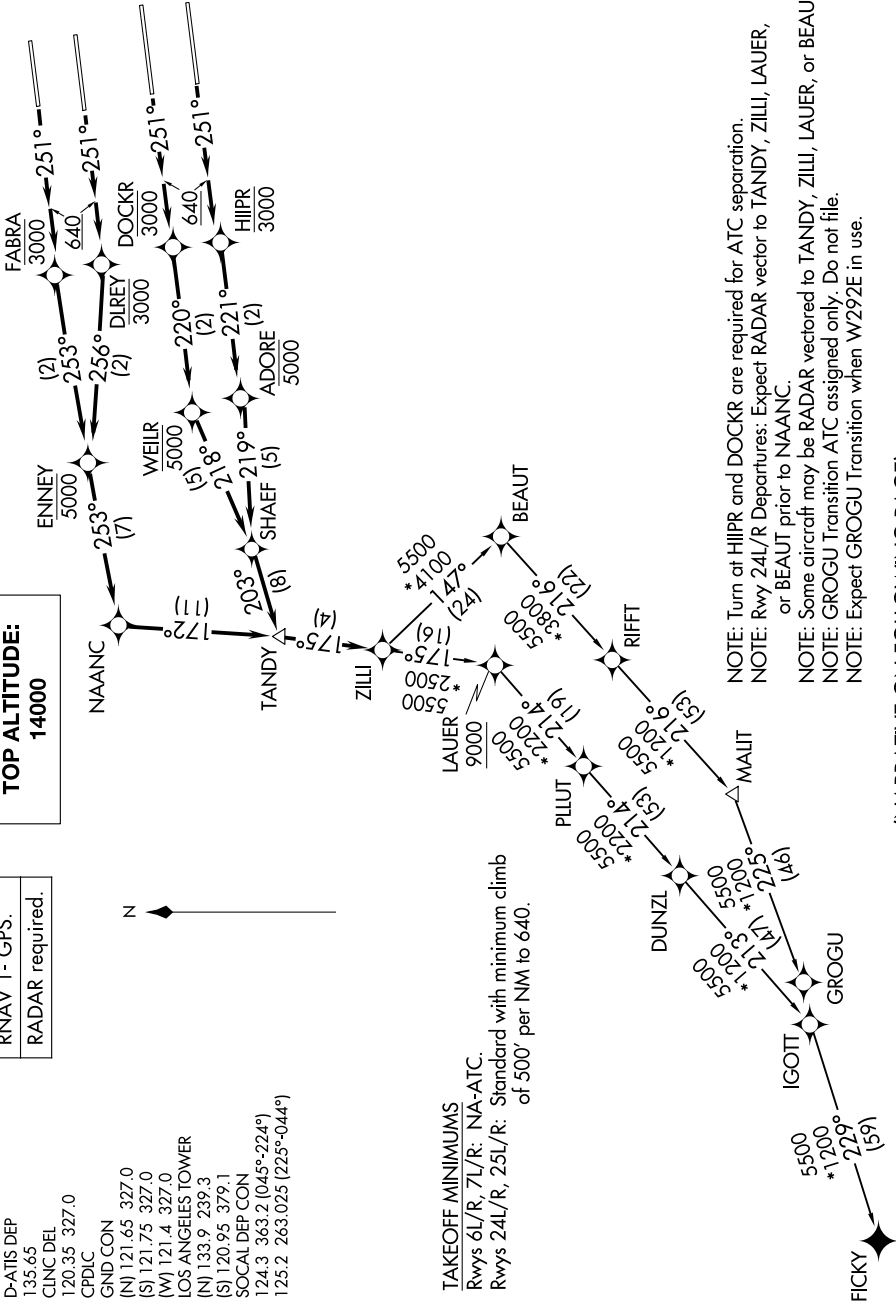
RNAV 1- GPS.
RADAR required.

D-ATIS DEP
135.65
CLNC DEL
120.35 327.0
CPDLC
GND CON
(N) 121.65 327.0
(S) 121.75 327.0
(M) 121.4 327.0
LOS ANGELES TOWER
(N) 133.9 239.3
(S) 120.95 379.1
SOCAL DEP CON
124.3 363.2 (045°-224°)
125.2 263.025 (225°-044°)



TAKEOFF MINIMUMS

Rwys 6L/R, 7L/R: NA-ATC.
Rwys 24L/R, 25L/R: Standard with minimum climb
of 500' per NM to 640.



NOTE: Turn at HIIPR and DOCKR are required for ATC separation.
NOTE: Rwy 24L/R Departures: Expect RADAR vector to TANDY, ZILLI, LAUER, or BEAUT prior to NAANC.
NOTE: Some aircraft may be RADAR vectored to TANDY, ZILLI, LAUER, or BEAUT.
NOTE: GROGU Transition ATC assigned only. Do not file.
NOTE: Expect GROGU Transition when W292E in use.

(NARRATIVE ON FOLLOWING PAGE)

NOTE: Chart not to scale.

SW-3, 10 JUL 2025 to 07 AUG 2025