


WAAS CH 42504 W07A	APP CRS 071°	Rwy Ldg 11259 TDZE 128 Apt Elev 128
--	------------------------	--

RNAV (GPS) Y RWY 7L
LOS ANGELES INTL (LAX)

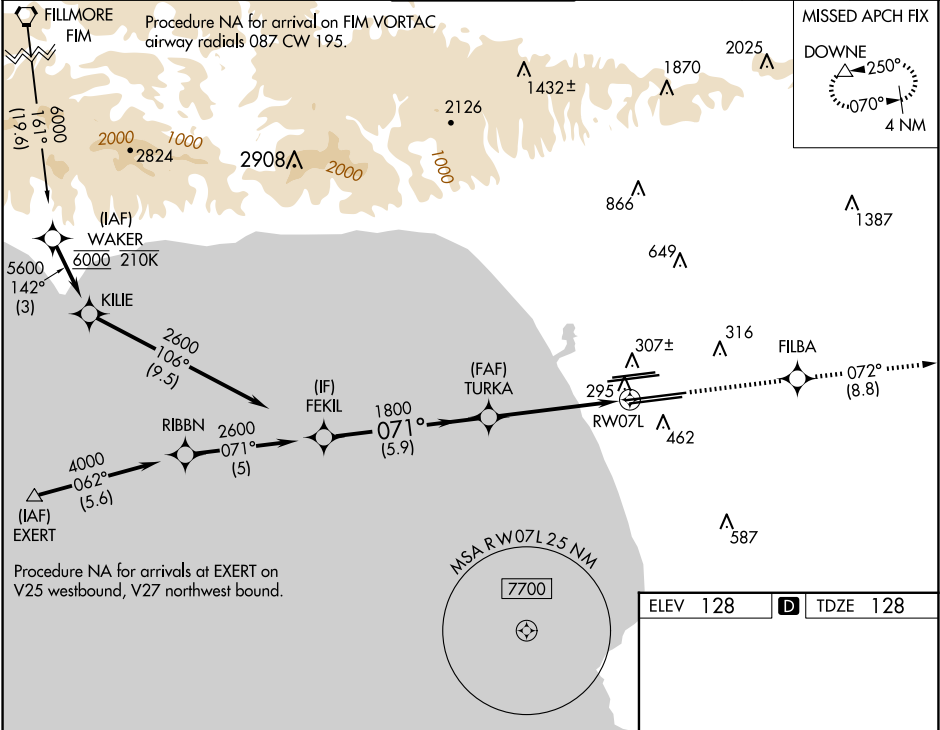
▽ For uncompensated Baro-VNAV systems, LNAV/VNAV NA below 5°C (41°F) or above 54°C (130°F). DME/DME RNP -0.3 NA. LNAV procedure NA during simultaneous operations. Use of FD or AP providing RNAV track guidance required during simultaneous operations. Simultaneous approach authorized.

MALSR



MISSED APPROACH: Climb to 3000 direct FILBA and on track 072° to DOWNE and hold.

D-ATIS ARR 133.8 DEP 135.65	SOCAL APP CON 124.3 363.2 (APCH FM WEST) 124.5 235.975 (225°-044°) 124.9 269.0 (090°-224°) 128.5 360.7 (045°-089°)	LOS ANGELES TOWER N 133.9 239.3 S 120.95 379.1	GND CON N 121.65 327.0 S 121.75 327.0 W 121.4 327.0	CLNC DEL 120.35 327.0	CPDLC
---	--	--	---	---	-------



VGSI and RNAV glidepath not coincident (VGSI Angle 3.00/TCH 83).		3000 ↑		FILBA ✦		tr 072°		DOWNE △			
---	--	-----------	--	------------	--	---------	--	------------	--	--	--

SW-3, 10 JUL 2025 to 07 AUG 2025

SW-3, 10 JUL 2025 to 07 AUG 2025