


| | | |
|--|------------------------|--|
| WAAS CH 53507 W25A | APP CRS 251° | Rwy Ldg 11095 TDZE 104 Apt Elev 128 |
|--|------------------------|--|

RNAV (GPS) Y RWY 25L

LOS ANGELES INTL (LAX)

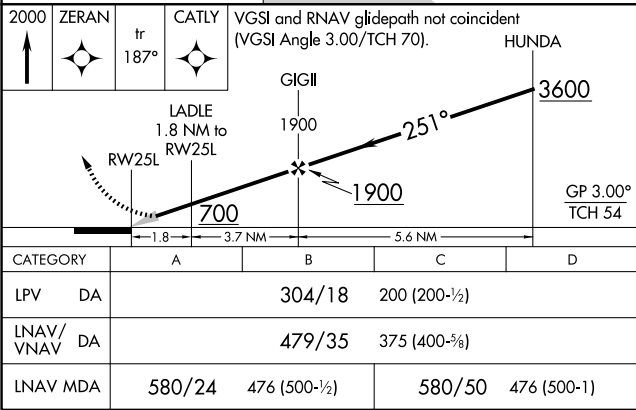
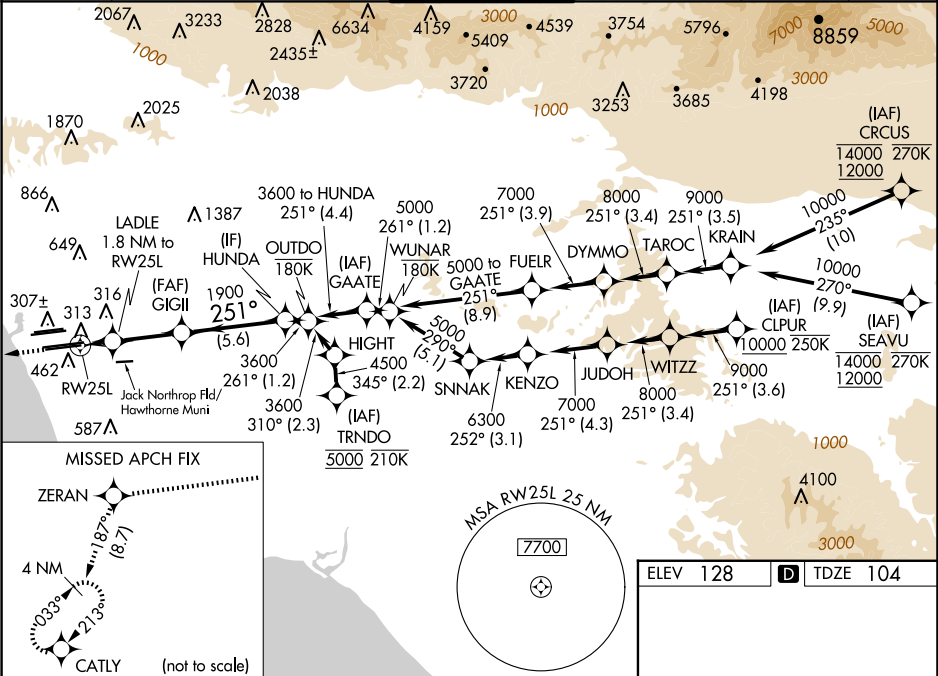
RNP APCH - GPS.

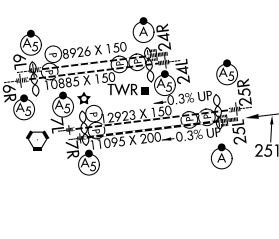
▼ For uncompensated Baro-VNAV systems, LNAV/VNAV NA below 5°C or above 54°C. Simultaneous approach authorized. Simultaneous approach authorized with HHR 25. For inop ALS, increase LNAV/VNAV all Cats visibility to RVR 5500, LNAV Cat C/D visibility to 1½ SM. LNAV procedure NA during simultaneous operations. Use of FD or AP required during simultaneous operations.

ALSF-2


MISSED APPROACH: Climb to 2000 direct ZERAN and on track 187° to CATLY and hold.

| | | | | | | |
|---|--|--|--|---|---|-------|
| D-ATIS ARR 133.8 DEP 135.65 | SOCAL APP CON 124.3 363.2 [APCH FM WEST] 124.5 235.975 [225°-044°] | 124.9 269.0 (090°-224°) 128.5 360.7 (045°-089°) | LOS ANGELES TOWER N 133.9 239.3 S 120.95 379.1 | GND CON N 121.65 327.0 S 121.75 327.0 W 121.4 327.0 | CLNC DEL 120.35 327.0 | CPDLC |
|---|--|--|--|---|---|-------|



| | |
|---|-------------------|
| ELEV 128 | D TDZE 104 |
|  | |
| TDZ/CL Rwy's 6R, 7L, 24R, and 25L HIRL all Rwy's | |