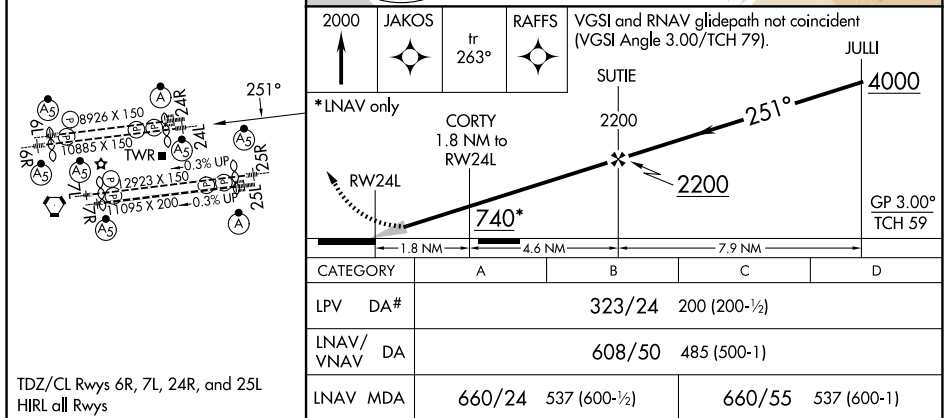


25163

RNAV (GPS) Y RWY 24L
LOS ANGELES INTL (LAX)

V Simultaneous approach authorized. LNAV procedure NA during simultaneous operations. Use of FD or AP providing RNAV track guidance required during simultaneous operations. Simultaneous approach authorized with HHR. For uncompensated Baro-VNAV systems, LNAV/VNAV NA below 5°C or above 54°C. For inop ALS, increase LNAV/VNAV all Cots visibility to 1½ SM. #RVR 1800 authorized with use of FD or AP or HUD to DA.

MISSED APPROACH:
Climb to 2000 direct
JAKOS and on track 263°
to RAFFS and hold.



LOS ANGELES INTL (LAX)
RNAV (GPS) Y RWY 24L

SW-3, 10 JUL 2025 to 07 AUG 2025