

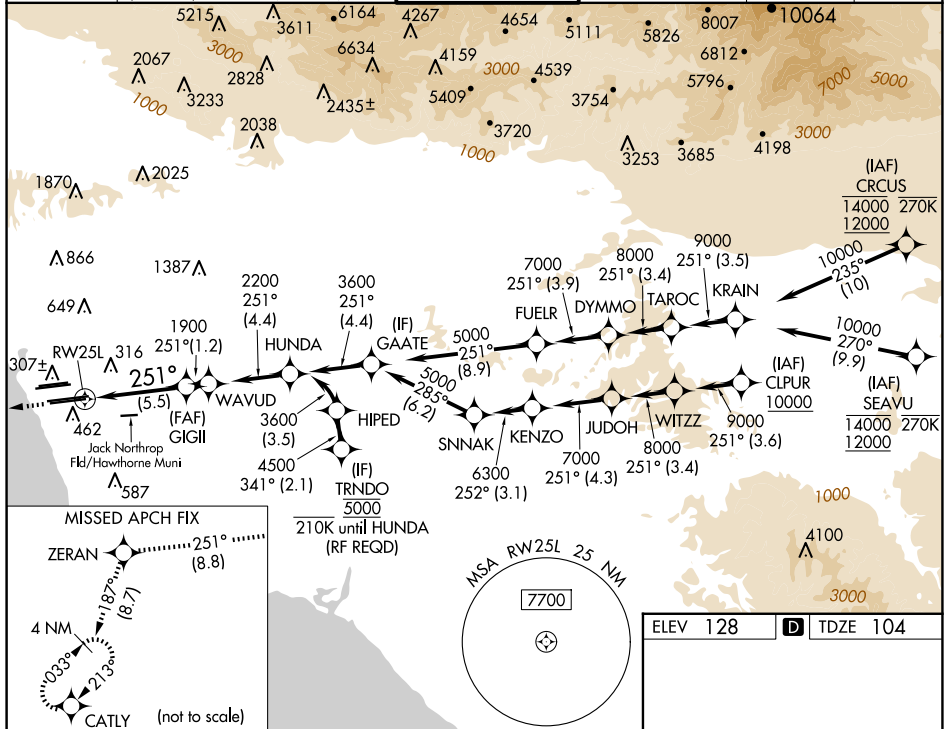


APP CRS <b>251°</b>	Rwy Ldg <b>11095</b> TDZE <b>104</b> Apt Elev <b>128</b>
------------------------	--

RNAV (RNP) Z RWY 25L  
LOS ANGELES INTL (LAX)

RNP AR APCH.				ALSF-2		MISSED APPROACH: Climb to 2000 on track 251° to ZERAN and on track 187° to CATLY and hold.	
 GPS required. For uncompensated Baro-VNAV systems, procedure NA below 5°C or above 54°C. Simultaneous approach authorized. Simultaneous approach authorized with HHR.							
D-ATIS		SOCAL APP CON		LOS ANGELES TOWER		GND CON	
ARR	133.8	124.3 363.2 (APCH FM WEST [090°-224°])	124.9 269.0 (090°-224°)	N 133.9 239.3	N 121.65 327.0	CLNC DEL	CPDLC
DEP	135.65	124.5 235.975 (225°-044°)	128.5 360.7 (045°-089°)	S 120.95 379.1	S 121.75 327.0 W 121.4 327.0	120.35 327.0	



CATEGORY	A	B	C	D
RNP 0.15 DA	445/30	341 (400-%)		
RNP 0.30 DA	543/50	439 (500-1)		

**AUTHORIZATION REQUIRED**

