

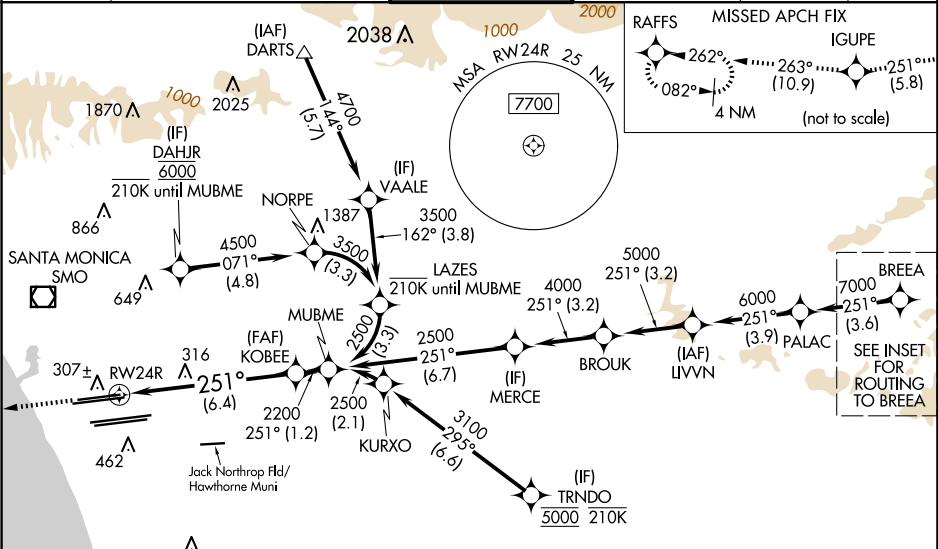
APP CRS	Rwy Ldg	8926
251°	TDZE	122
	Apt Elev	128

RNAV (RNP) Z RWY 24R

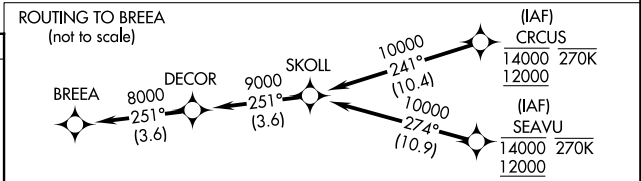
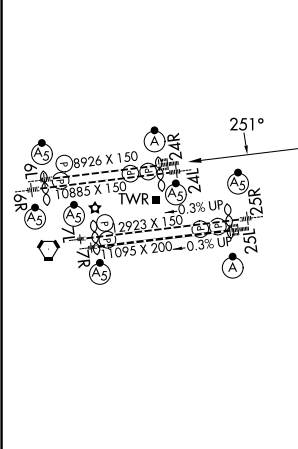
LOS ANGELES INTL (LAX)

RNP AR APCH-GPS.	ALSF-2	MISSED APPROACH: Climb to 2000 on track 251° to IGUPE and track 263° to RAFFS and hold.
Simultaneous approach authorized with HHR. For uncompensated Baro-VNAV systems, procedure NA below 5°C or above 54°C. For inop ALS, increase RNP 0.15 all Cats visibility to RVR 6000 and RNP 0.30 all Cats visibility to 1½ SM. Simultaneous approach authorized.		

D-ATIS	SOCAL APP CON	LOS ANGELES TOWER	GND CON	CLNC DEL	CPDLC
ARR 133.8	124.3 363.2	N 133.9 239.3	N 121.65 327.0	120.35	
DEP 135.65	124.5 235.975	S 120.95 379.1	S 121.75 327.0	327.0	
	(225°-044°)	(090°-224°)	W 121.4 327.0		
		(045°-089°)			



ELEV 128	TDZE 122
----------	----------



2000	IGUPE	tr 251°	RAFFS	See planview for multiple IF locations.
tr 251°	tr 263°			
VGSI and RNAV glidepath not coincident (VGSI Angle 3.00/TCH 73).				
RW24R				
GP 3.00° TCH 55				
6.4 NM				
1.2 NM				
CATEGORY	A	B	C	D
RNP 0.15 DA	484/40	362 (400-¾)		
RNP 0.30 DA	586/60	464 (500-1½)		

TDZ/CL Rwy 6R, 7L, 24R, and 25L

HIRL all Rwy