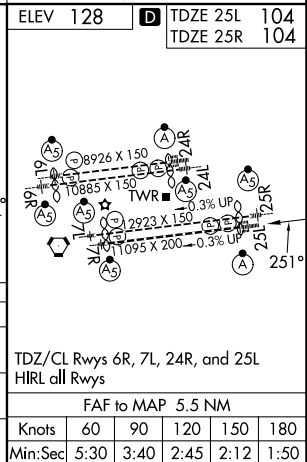
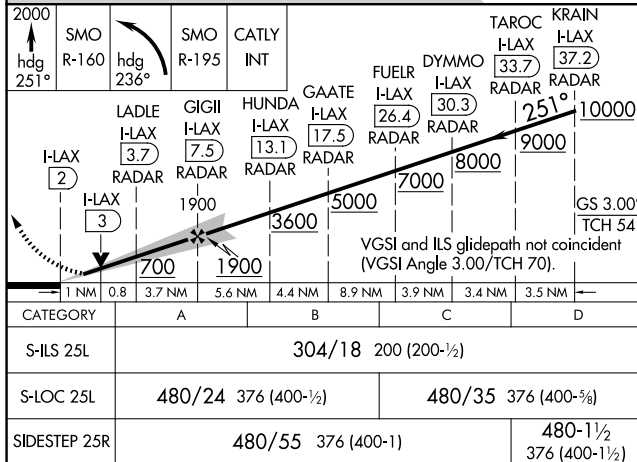
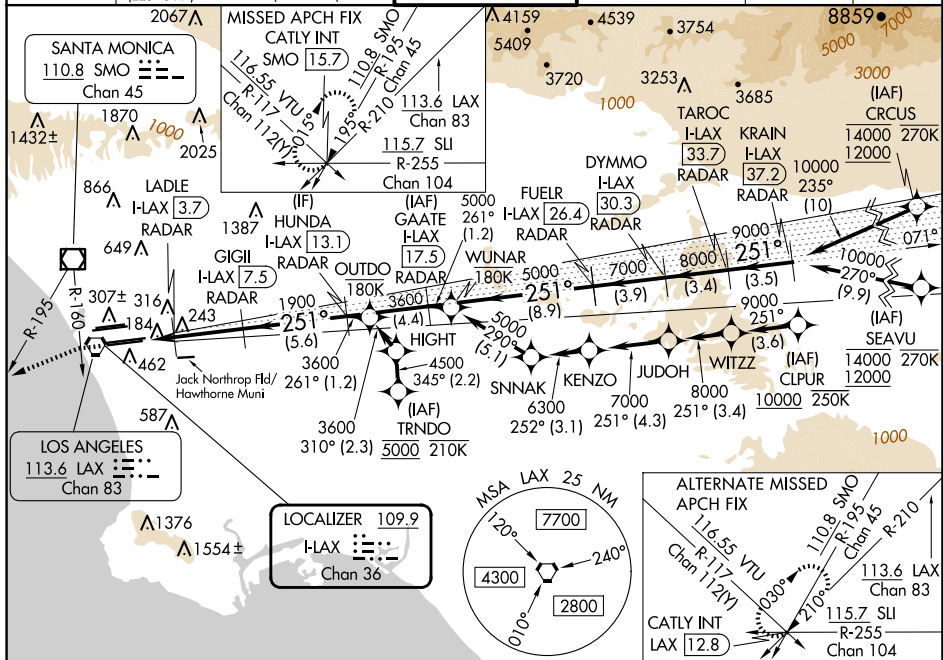


ILS or LOC RWY 25L
LOS ANGELES INTL (LAX)

MISSED APPROACH: Climb to 2000 on heading 251° until crossing the SMO R-160, then left turn on heading 236° and on the SMO R-195 to CATLY INT/SMO 15.7 DME and hold.

D-ATIS	SOCAL APP CON		LOS ANGELES TOWER	GND CON		CLNC DEL	CPDLC
ARR 133.8	124.3 366.2 (APCH FM WEST)	124.9 269.0 (090°-224°)	N 133.9 239.3	N 121.65 327.0		120.35	
DEP 135.65	124.5 235.975 (225°-044°)	128.5 360.7 (045°-089°)	S 120.95 379.1	S 121.75 327.0		327.0	
				W 121.4 327.0			



SW-3, 10 JUL 2025 to 07 AUG 2025