

LOC/DME I-HQB	APP CRS	Rwy Ldg	24L	24R
111.7	251°	TDZE	9483	8926
Chan 54		Apt Elev	123	122
			128	128

ILS or LOC RWY 24L
LOS ANGELES INTL (LAX)

RNAV 1-GPS or RADAR required for procedure entry. DME or RADAR required.
From CRCUS: RNAV 1-GPS required. From SEAVU: RNAV 1-GPS required.

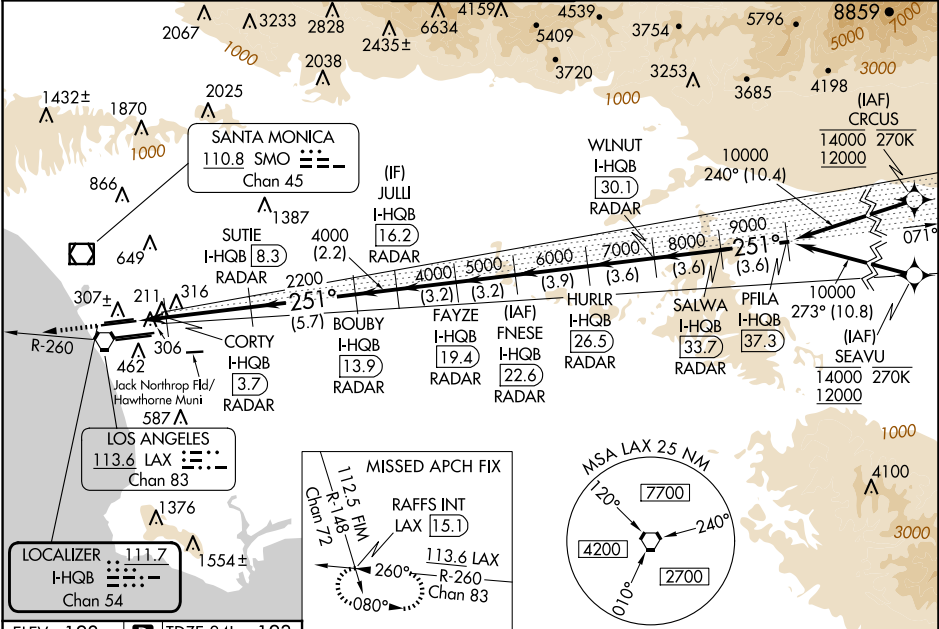
Simultaneous approach authorized with HHR. Inop table does not apply to Sidestep Rwy 24R Cat A and B. Simultaneous approach authorized. LOC procedure NA during simultaneous operations with HHR LOC RWY 25. For inop ALS, increase Sidestep 24R Cat C visibility to 1½ SM. For inop ALS, increase S-LOC 24L Cat C/D visibility to RVR 5500. #RVR 1800 authorized with use of FD or AP or HUD to DA.

MALSR Rwy 24L

ALSIF-2 Rwy 24R

MISSED APPROACH:
Climb to 2000 on heading 251° and LAX VORTAC R-260 to RAFFS INT/LAX 15.1 DME and hold.

D-ATIS	SOCAL APP CON	LOS ANGELES TOWER	GND CON	CLNC DEL	CPDLC
ARR 133.8	124.3 363.2 (APCH FM WEST)	N 133.9 239.3	N 121.65 327.0	120.35	
DEP 135.65	124.5 235.975 (225°-044°)	S 120.95 379.1 (045°-089°)	S 121.75 327.0 W 121.4 327.0	327.0	



ELEV 128	TDZE 24L 123	TDZE 24R 122
Min:Sec 6:24 4:16 3:12 2:34 2:08		
Knots 60 90 120 150 180		
FAF to MAP 6.4 NM		
TDZ/CL Rwy 6R, 7L, 24R, and 25L		
HIRL all Rwy		
SIDESTEP 24R		
S-LOC 24L		
S-ILS 24L#		
CATEGORY		
*LOC only.		
VGSI and ILS glidepath not coincident (VGSI Angle 3.00/TCH 79).		
GS 3.00°		
TCH 59		