

LOC/DME I-LAX	APP CRS	Rwy Ldg	11095
109.9	251°	TDZE	104
Chan 36		Apt Elev	128

ILS RWY 25L (CAT II & III)

LOS ANGELES INTL (LAX)

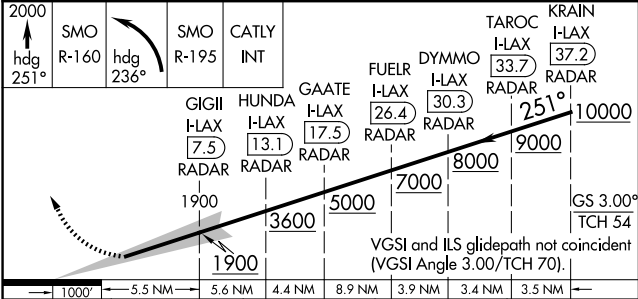
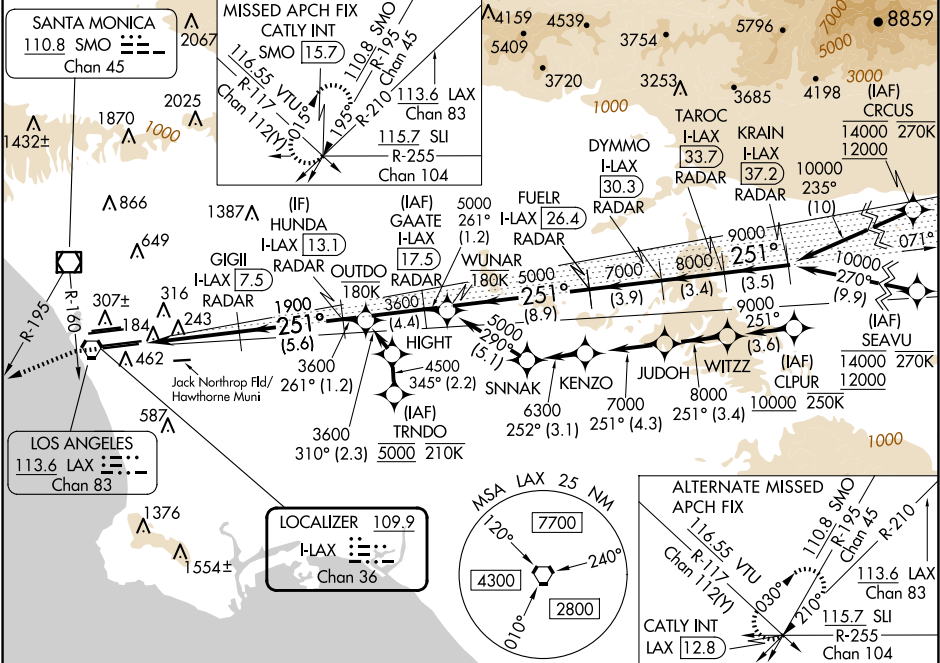
RNP APCH - GPS. From CLIPUR or CRCUS or SEAVU or TRNDO.
DME or RADAR required.



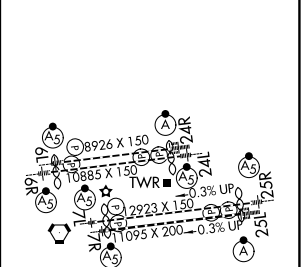
MISSED APPROACH: Climb to 2000 on heading 251° until crossing the SMO R-160 then left turn on heading 236° and on the SMO R-195 to CATLY INT/SMO 15.7 DME and hold.

Simultaneous approach authorized.
Simultaneous approach authorized with HHR.

D-ATIS	SOCAL APP CON	LOS ANGELES TOWER	GND CON	CLNC DEL	CPDLC
ARR 133.8	124.3 363.2 124.9 269.0	N 133.9 239.3	N 121.65 327.0	120.35	
DEP 135.65	124.5 235.975 128.5 360.7	S 120.95 379.1	S 121.75 327.0	327.0	
	(225°-044°)	(045°-089°)	W 121.4 327.0		



ELEV 128	TDZE 104
----------	----------



CATEGORY	A	B	C	D
S-ILS 25L	CAT II	RA 107/12	100 DA 204	
S-ILS 25L	CAT III	RVR 06		

CATEGORY II & III ILS - SPECIAL AIRCREW & AIRCRAFT CERTIFICATION REQUIRED

TDZ/CL Rwy 6R, 7L, 24R, and 25L
HIRL all Rwy's

SW-3, 10 JUL 2025 to 07 AUG 2025

SW-3, 10 JUL 2025 to 07 AUG 2025