

LOC/DME I-OSS 108.5 Chan 22	APP CRS 251°	Rwy Ldg 8926 TDZE 122 Apt Elev 128
---	------------------------	---

ILS RWY 24R (CAT II & III)
LOS ANGELES INTL (LAX)

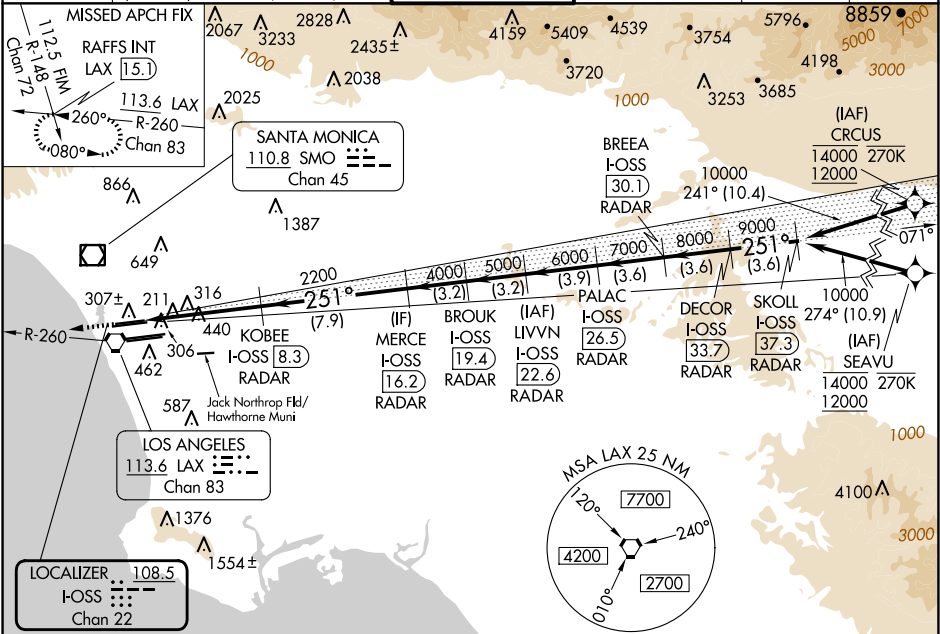
From CRCSU, SEAVU: RNAV 1-GPS required. DME or RADAR required.

Simultaneous approach authorized with HHR.
Simultaneous approach authorized.

ALSF-2

MISSED APPROACH: Climb to 2000 on heading 251° and LAX VORTAC R-260 to RAFFS INT/LAX 15.1 DME and hold.

D-ATIS ARR 133.8 DEP 135.65	SOCAL APP CON 124.3 363.2 (APCH FM WEST) 124.5 235.975 (225°-044°)	LOS ANGELES TOWER N 133.9 239.3 S 120.95 379.1 (090°-224°) (045°-089°)	GND CON N 121.65 327.0 S 121.75 327.0 W 121.4 327.0	CLNC DEL 120.35 327.0	CPDLC
---	--	--	---	---	-------



ELEV 128 TDZE 122

2000
hdg 251°

VGSI and ILS glidepath not coincident
(VGSI Angle 3.00/TCH 73).

DECOR SKOLL
I-OSS I-OSS
[33.7] [37.3]
RADAR RADAR

BROOK LUVN
I-OSS I-OSS
[19.4] [22.6]
RADAR RADAR

COBEE
I-OSS
[8.3]
RADAR

2200 4000 5000 6000 7000 8000 9000 10000

10267 6.4 NM 7.9 NM 3.2 NM 3.2 NM 3.9 NM 3.6 NM 3.6 NM 3.6 NM

CATEGORY	A	B	C	D
S-ILS 24R	CAT II RA 118/12 100 DA 222			
S-ILS 24R	CAT III RVR 06			

CATEGORY II & III ILS - SPECIAL AIRCREW & AIRCRAFT CERTIFICATION REQUIRED

SW-3, 10 JUL 2025 to 07 AUG 2025

SW-3, 10 JUL 2025 to 07 AUG 2025