

ARRIVAL ROUTE DESCRIPTION

RDHOT TRANSITION (RDHOT.DIRBY2)

TCUPS TRANSITION (TCUPS.DIRBY2)

TILLT TRANSITION (TILLT.DIRBY2)

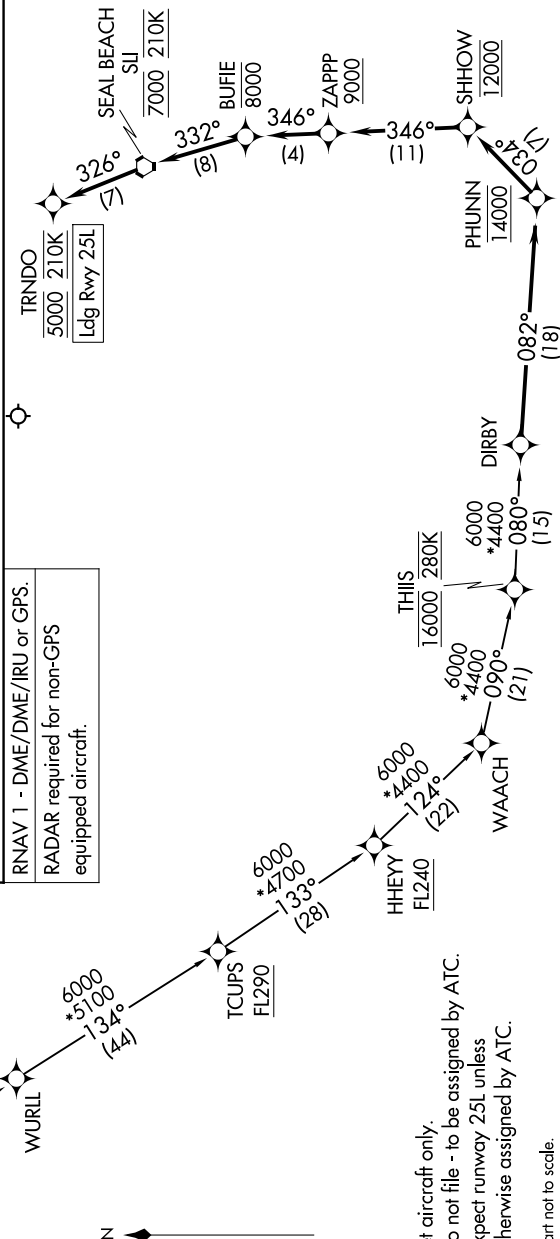
From DIRBY on track 082° to cross PHUNNI at 14000, then on track 034° to cross SHHOW at 12000, then on track 346° to cross ZAPP at or above 9000, then on track 346° to cross BUFE at or below 8000, then on track 332° to cross SLI VORTAC at 7000 and at 210K, then on track 326° to cross TRNDO at 5000 and at 210K. Expect ILS or LOC RWY 25L or RNP Z RWY 25L.

LOST COMMUNICATIONS

In the event of lost communications: RNP arrivals proceed on the RNAV (RNP) Z RWY 25L approach. All other aircraft proceed on the ILS or LOC RWY 25L.

RNAV 1 - DME/DME/IRU or GPS.

RADAR required for non-GPS equipped aircraft.



NOTE: Jet aircraft only.

NOTE: Do not file - to be assigned by ATC.

NOTE: Expect runway 25L unless

otherwise assigned by ATC.

NOTE: Chart not to scale.

DIRBY TWO ARRIVAL (RNAV)